

For Research Use Only

# Ferritin light chain Monoclonal antibody, PBS Only



Catalog Number: 68068-1-PBS

## Basic Information

<b>Catalog Number:</b> 68068-1-PBS	<b>GenBank Accession Number:</b> BC008439	<b>Purification Method:</b> Protein G purification
<b>Size:</b> 100ug , Concentration: 1 mg/ml by Nanodrop;	<b>GeneID (NCBI):</b> 2512	<b>CloneNo.:</b> 1F9F5
<b>Source:</b> Mouse	<b>UNIPROT ID:</b> P02792	
<b>Isotype:</b> IgG1	<b>Full Name:</b> ferritin, light polypeptide	
<b>Immunogen Catalog Number:</b> AG20637	<b>Calculated MW:</b> 19 kDa	
	<b>Observed MW:</b> 18 kDa	

## Applications

**Tested Applications:**  
WB, IF, IHC, ELISA

**Species Specificity:**  
Human, Mouse

## Background Information

FTL belongs to the ferritin family. It stores iron in a soluble, non-toxic, readily available form. FTL is important for iron homeostasis. It plays a role in delivery of iron to cells. FTL mediates iron uptake in capsule cells of the developing kidney. Mutation of FTL will cause hereditary hyperferritinemia-cataract syndrome (HHCS) or neurodegeneration with brain iron accumulation type 3 (NBIA3). Ferritin light polypeptide (FTL) and ferritin heavy polypeptide (FTH1) were the main constituents the striatum and cerebellar cortex revealed.

## Storage

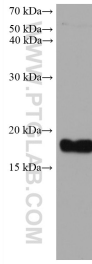
**Storage:**  
Store at -80°C.

**Storage Buffer:**  
PBS only

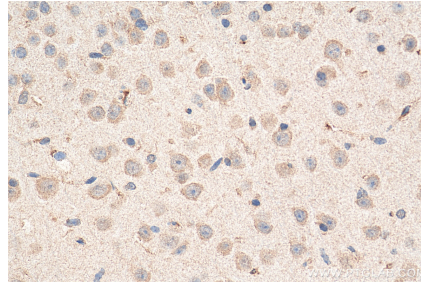
For technical support and original validation data for this product please contact:  
T: 1 (888) 4PTGLAB (1-888-478-4522) (toll free in USA), or 1(312) 455-8498 (outside USA)      E: proteintech@ptglab.com  
W: ptglab.com

**This product is exclusively available under Proteintech Group brand and is not available to purchase from any other manufacturer.**

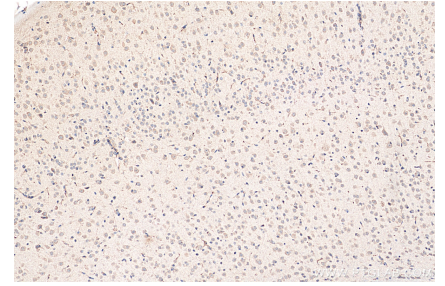
## Selected Validation Data



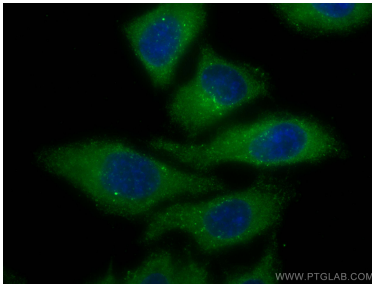
A549 cells were subjected to SDS PAGE followed by western blot with 68068-1-Ig (Ferritin light chain antibody) at dilution of 1:10000 incubated at room temperature for 1.5 hours. This data was developed using the same antibody clone with 68068-1-PBS in a different storage buffer formulation.



Immunohistochemical analysis of paraffin-embedded mouse brain tissue slide using 68068-1-Ig (Ferritin light chain antibody) at dilution of 1:1000 (under 40x lens). Heat mediated antigen retrieval with Tris-EDTA buffer (pH 9.0). This data was developed using the same antibody clone with 68068-1-PBS in a different storage buffer formulation.



Immunohistochemical analysis of paraffin-embedded mouse brain tissue slide using 68068-1-Ig (Ferritin light chain antibody) at dilution of 1:1000 (under 10x lens). Heat mediated antigen retrieval with Tris-EDTA buffer (pH 9.0). This data was developed using the same antibody clone with 68068-1-PBS in a different storage buffer formulation.



Immunofluorescent analysis of (-20°C Methanol) fixed HepG2 cells using FTL antibody (68068-1-Ig, Clone: 1F9F5 ) at dilution of 1:800 and CoraLite®488-Conjugated AffiniPure Goat Anti-Mouse IgG(H+L). This data was developed using the same antibody clone with 68068-1-PBS in a different storage buffer formulation.