

For Research Use Only

# EEA1 Monoclonal antibody, PBS Only



Catalog Number: 68065-1-PBS

## Basic Information

<b>Catalog Number:</b> 68065-1-PBS	<b>GenBank Accession Number:</b> NM_003566	<b>Purification Method:</b> Protein A purification
<b>Size:</b> 100ug , Concentration: 1 mg/ml by Nanodrop;	<b>GeneID (NCBI):</b> 8411	<b>CloneNo.:</b> 1E11E4
<b>Source:</b> Mouse	<b>UNIPROT ID:</b> Q15075	
<b>Isotype:</b> IgG1	<b>Full Name:</b> early endosome antigen 1	
<b>Immunogen Catalog Number:</b> AG28814	<b>Calculated MW:</b> 162 kDa	
	<b>Observed MW:</b> 162 kDa	

## Applications

**Tested Applications:**  
WB, IF, Indirect ELISA

**Species Specificity:**  
Human, Mouse, Rat

## Background Information

Early endosome antigen 1 (EEA1) is a marker of early endosomes and has an important role in endosomal trafficking. EEA1 contains coiled-coil regions and an FYVE-type zinc finger which interacts with phosphatidylinositol-3-phosphate. EEA1 functions as a Rab5 effector, mediates endosome docking and, together with SNAREs, leads to membrane fusion.

## Storage

**Storage:**  
Store at -80°C.

**Storage Buffer:**  
PBS Only

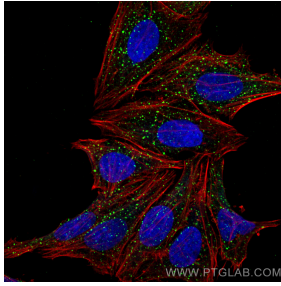
For technical support and original validation data for this product please contact:

T: 1 (888) 4PTGLAB (1-888-478-4522) (toll free in USA), or 1(312) 455-8498 (outside USA)

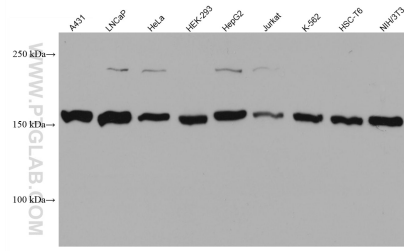
E: [proteintech@ptglab.com](mailto:proteintech@ptglab.com)  
W: [ptglab.com](http://ptglab.com)

**This product is exclusively available under Proteintech Group brand and is not available to purchase from any other manufacturer.**

## Selected Validation Data



Immunofluorescent analysis of (4% PFA) fixed HepG2 cells using EEA1 antibody (68065-1-Ig, Clone: 1E11E4) at dilution of 1:3000 and CoraLite®488-Conjugated AffiniPure Goat Anti-Mouse IgG(H+L), CL594-Phalloidin (red). This data was developed using the same antibody clone with 68065-1-PBS in a different storage buffer formulation.



Various lysates were subjected to SDS PAGE followed by western blot with 68065-1-Ig (EEA1 antibody) at dilution of 1:10000 incubated at room temperature for 1.5 hours. This data was developed using the same antibody clone with 68065-1-PBS in a different storage buffer formulation.