

For Research Use Only

# EEA1 Monoclonal antibody

Catalog Number: 68065-1-Ig 5 Publications



## Basic Information

Catalog Number:	GenBank Accession Number:	Purification Method:
68065-1-Ig	NM_003566	Protein G purification
Size:	GeneID (NCBI):	CloneNo.:
150ul , Concentration: 1000 µg/ml by Nanodrop;	8411	1E11E4
Source:	Full Name:	Recommended Dilutions:
Mouse	early endosome antigen 1	WB 1:5000-1:50000
Isotype:	Calculated MW:	IF 1:1500-1:6000
IgG1	Observed MW:	
Immunogen Catalog Number:	162 kDa	
AG28814		

## Applications

Tested Applications:	Positive Controls:
IF, WB, ELISA	WB : A431 cells, LNCaP cells, HeLa cells, HEK-293 cells, HepG2 cells, Jurkat cells, K-562 cells, HSC-T6 cells, NIH/3T3 cells
Cited Applications:	IF : HepG2 cells,
IF	
Species Specificity:	
Human, Mouse, Rat	
Cited Species:	
human, mouse	

## Background Information

Early endosome antigen 1 (EEA1) is a marker of early endosomes and has an important role in endosomal trafficking. EEA1 contains coiled-coil regions and an FYVE-type zinc finger which interacts with phosphatidylinositol-3-phosphate. EEA1 functions as a Rab5 effector, mediates endosome docking and, together with SNAREs, leads to membrane fusion.

## Notable Publications

Author	Pubmed ID	Journal	Application
Honghong Zhan	36552516	Antioxidants (Basel)	IF
Jian Bao	34864680	J Alzheimers Dis	IF
Melanie Engler	37402592	Life Sci Alliance	IF

## Storage

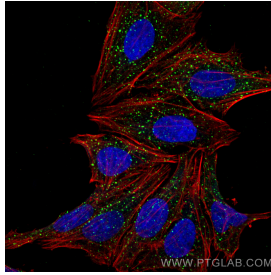
Storage:  
Store at -20°C.  
Storage Buffer:  
PBS with 0.02% sodium azide and 50% glycerol pH 7.3.  
Aliquoting is unnecessary for -20°C storage

\*\*\* 20ul sizes contain 0.1% BSA

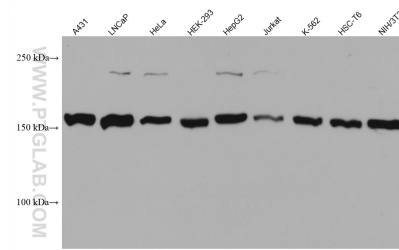
For technical support and original validation data for this product please contact:  
T: 1 (888) 4PTGLAB (1-888-478-4522) (toll free in USA), or 1(312) 455-8498 (outside USA)  
E: proteintech@ptglab.com  
W: ptglab.com

This product is exclusively available under Proteintech Group brand and is not available to purchase from any other manufacturer.

## Selected Validation Data



Immunofluorescent analysis of (4% PFA) fixed HepG2 cells using EEA1 antibody (68065-1-Ig, Clone: 1E11E4 ) at dilution of 1:3000 and CoraLite®488-Conjugated AffiniPure Goat Anti-Mouse IgG(H+L), CL594-Phalloidin (red).



Various lysates were subjected to SDS PAGE followed by western blot with 68065-1-Ig (EEA1 antibody) at dilution of 1:10000 incubated at room temperature for 1.5 hours.