

For Research Use Only

# NSF Monoclonal antibody, PBS Only

Catalog Number: 68061-1-PBS

Featured Product



## Basic Information

Catalog Number:

68061-1-PBS

Size:

100ug, Concentration: 1 mg/ml by Nanodrop;

Source:

Mouse

Isotype:

IgG2a

Immunogen Catalog Number:

AG15422

GenBank Accession Number:

BC030613

GeneID (NCBI):

4905

UNIPROT ID:

P46459

Full Name:

N-ethylmaleimide-sensitive factor

Calculated MW:

744 aa, 83 kDa

Observed MW:

70-83 kDa

Purification Method:

Protein A purification

CloneNo.:

2B6H6

## Applications

Tested Applications:

WB, IF, Indirect ELISA

Species Specificity:

Human, Pig, Rabbit, Rat, Mouse, Chicken

## Storage

Storage:

Store at -80°C.

Storage Buffer:

PBS Only

For technical support and original validation data for this product please contact:

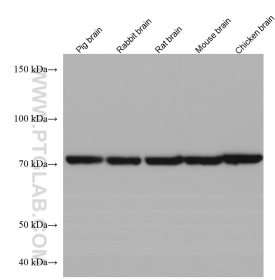
T: 1 (888) 4PTGLAB (1-888-478-4522) (toll free in USA), or 1(312) 455-8498 (outside USA)

E: [proteintech@ptglab.com](mailto:proteintech@ptglab.com)

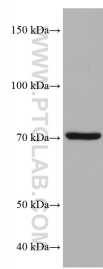
W: [ptglab.com](http://ptglab.com)

This product is exclusively available under Proteintech Group brand and is not available to purchase from any other manufacturer.

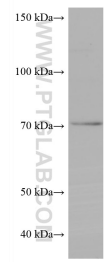
## Selected Validation Data



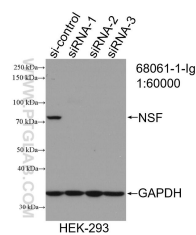
Various lysates were subjected to SDS PAGE followed by western blot with 68061-1-Ig (NSF antibody) at dilution of 1:10000 incubated at room temperature for 1.5 hours. This data was developed using the same antibody clone with 68061-1-PBS in a different storage buffer formulation.



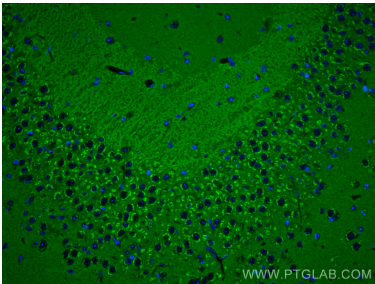
PC-12 cells were subjected to SDS PAGE followed by western blot with 68061-1-Ig (NSF antibody) at dilution of 1:10000 incubated at room temperature for 1.5 hours. This data was developed using the same antibody clone with 68061-1-PBS in a different storage buffer formulation.



SH-SY5Y cells were subjected to SDS PAGE followed by western blot with 68061-1-Ig (NSF antibody) at dilution of 1:10000 incubated at room temperature for 1.5 hours. This data was developed using the same antibody clone with 68061-1-PBS in a different storage buffer formulation.



WB result of NSF antibody (68061-1-Ig; 1:60000; incubated at room temperature for 1.5 hours) with sh-Control and sh-NSF transfected HEK-293 cells. This data was developed using the same antibody clone with 68061-1-PBS in a different storage buffer formulation.



Immunofluorescent analysis of (4% PFA) fixed mouse brain tissue using NSF antibody (68061-1-Ig; Clone: 2B6H6) at dilution of 1:600 and CoraLite® 488-Conjugated AffiniPure Goat Anti-Mouse IgG(H+L). This data was developed using the same antibody clone with 68061-1-PBS in a different storage buffer formulation.