

For Research Use Only

GEN1 Monoclonal antibody, PBS Only

Catalog Number: 68060-1-PBS

Featured Product



Basic Information

Catalog Number:

68060-1-PBS

Size:

100ug, Concentration: 1mg/ml by Nanodrop;

Source:

Mouse

Isotype:

IgG1

Immunogen Catalog Number:

AG31247

GenBank Accession Number:

NM_182625

GeneID (NCBI):

348654

UNIPROT ID:

Q17RS7

Full Name:

Gen homolog 1, endonuclease (Drosophila)

Calculated MW:

103 kDa

Observed MW:

98-100 kDa

Purification Method:

Protein G purification

CloneNo.:

1A10D10

Applications

Tested Applications:

WB, Indirect ELISA

Species Specificity:

human

Background Information

GEN1 is an endonuclease which resolves Holliday junctions (HJs) by the introduction of symmetrically related cuts across the junction point, to produce nicked duplex products in which the nicks can be readily ligated. GEN1 efficiently cleaves both single and double HJs contained within large recombination intermediates.

Storage

Storage:

Store at -80°C.

Storage Buffer:

PBS Only

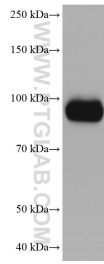
For technical support and original validation data for this product please contact:

T: 1 (888) 4PTGLAB (1-888-478-4522) (toll free in USA), or 1(312) 455-8498 (outside USA)

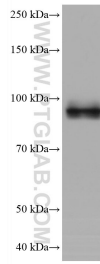
E: proteintech@ptglab.com
W: ptglab.com

This product is exclusively available under Proteintech Group brand and is not available to purchase from any other manufacturer.

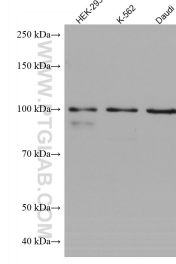
Selected Validation Data



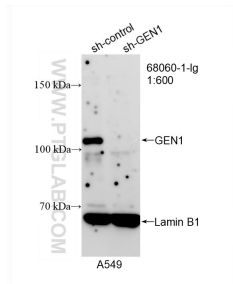
U2OS cells were subjected to SDS PAGE followed by western blot with 68060-1-Ig (GEN1 antibody) at dilution of 1:2000 incubated at room temperature for 1.5 hours. This data was developed using the same antibody clone with 68060-1-PBS in a different storage buffer formulation.



A549 cells were subjected to SDS PAGE followed by western blot with 68060-1-Ig (GEN1 antibody) at dilution of 1:2000 incubated at room temperature for 1.5 hours. This data was developed using the same antibody clone with 68060-1-PBS in a different storage buffer formulation.



Various lysates were subjected to SDS PAGE followed by western blot with 68060-1-Ig (GEN1 antibody) at dilution of 1:2000 incubated at room temperature for 1.5 hours. This data was developed using the same antibody clone with 68060-1-PBS in a different storage buffer formulation.



WB result of GEN1 antibody (68060-1-Ig; 1:600; incubated at room temperature for 1.5 hours) with sh-Control and sh-GEN1 transfected A549 cells. This data was developed using the same antibody clone with 68060-1-PBS in a different storage buffer formulation.