

For Research Use Only

# RPL9 Monoclonal antibody, PBS Only

Catalog Number: 68054-1-PBS



## Basic Information

<b>Catalog Number:</b> 68054-1-PBS	<b>GenBank Accession Number:</b> BC066318	<b>Purification Method:</b> Protein G purification
<b>Size:</b> 100ug, Concentration: 1 mg/ml by Nanodrop;	<b>GeneID (NCBI):</b> 6133	<b>CloneNo.:</b> 2A6B11
<b>Source:</b> Mouse	<b>UNIPROT ID:</b> P32969	
<b>Isotype:</b> IgG1	<b>Full Name:</b> ribosomal protein L9	
<b>Immunogen Catalog Number:</b> AG5391	<b>Calculated MW:</b> 22 kDa	
	<b>Observed MW:</b> 22 kDa	

## Applications

**Tested Applications:**  
WB, IF, IHC, Indirect ELISA

**Species Specificity:**  
Human, Mouse, Rat

## Storage

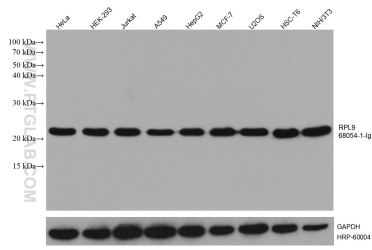
**Storage:**  
Store at -80°C.

**Storage Buffer:**  
PBS Only

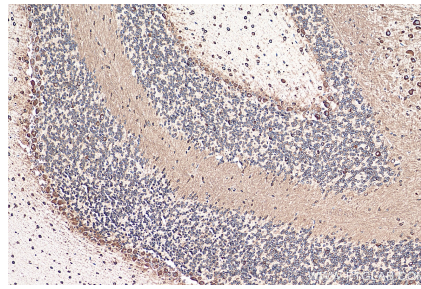
For technical support and original validation data for this product please contact:  
T: 1 (888) 4PTGLAB (1-888-478-4522) (toll free in USA), or 1(312) 455-8498 (outside USA)      E: proteintech@ptglab.com  
W: ptglab.com

This product is exclusively available under Proteintech Group brand and is not available to purchase from any other manufacturer.

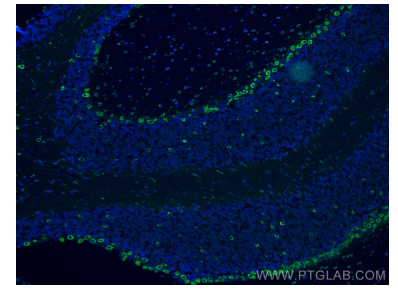
## Selected Validation Data



Various lysates were subjected to SDS PAGE followed by western blot with 68054-1-Ig (RPL9 antibody) at dilution of 1:10000 incubated at room temperature for 1.5 hours. The membrane was stripped and reblotted with HRP-conjugated GAPDH Monoclonal antibody (HRP-60004) as loading control. This data was developed using the same antibody clone with 68054-1-PBS in a different storage buffer formulation.



Immunohistochemical analysis of paraffin-embedded mouse cerebellum tissue slide using 68054-1-Ig (RPL9 antibody) at dilution of 1:200 (under 10x lens). Heat mediated antigen retrieval with Tris-EDTA buffer (pH 9.0). This data was developed using the same antibody clone with 68054-1-PBS in a different storage buffer formulation.



Immunofluorescent analysis of (4% PFA) fixed mouse cerebellum tissue using RPL9 antibody (68054-1-Ig, Clone: 2A6B11) at dilution of 1:400 and CoraLite®488-Conjugated AffiniPure Goat Anti-Mouse IgG(H+L). This data was developed using the same antibody clone with 68054-1-PBS in a different storage buffer formulation.