

For Research Use Only

ZFP36L1 Monoclonal antibody, PBS Only



Catalog Number: 68038-1-PBS

Basic Information

Catalog Number: 68038-1-PBS	GenBank Accession Number: BC018340	Purification Method: Protein A purification
Size: 100ug , Concentration: 1 mg/ml by Nanodrop;	GeneID (NCBI): 677	CloneNo.: 1H6G6
Source: Mouse	UNIPROT ID: Q07352	
Isotype: IgG2b	Full Name: zinc finger protein 36, C3H type-like 1	
Immunogen Catalog Number: AG30469	Calculated MW: 338 aa, 36 kDa	
	Observed MW: 36 kDa	

Applications

Tested Applications:
WB, IF, Indirect ELISA

Species Specificity:
Human, Rat

Background Information

As a member of the Tristetraprolin (TTP) RNA binding protein family, ZFP36L1 regulate gene expression post-transcriptionally by promoting mRNA decay. In mammals, ZFP36L1 and its family members have been shown to regulate development, cell differentiation, cell cycle, apoptosis and anti-cancer capability by targeting an extensive overlapping repertoire of mRNAs.

Storage

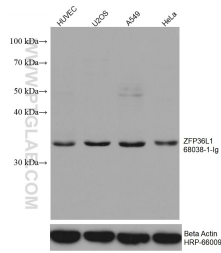
Storage:
Store at -80°C.

Storage Buffer:
PBS Only

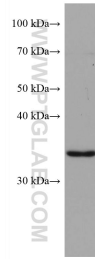
For technical support and original validation data for this product please contact:
T: 1 (888) 4PTGLAB (1-888-478-4522) (toll free in USA), or 1(312) 455-8498 (outside USA) E: proteintech@ptglab.com
W: ptglab.com

This product is exclusively available under Proteintech Group brand and is not available to purchase from any other manufacturer.

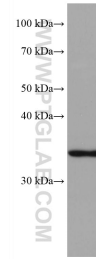
Selected Validation Data



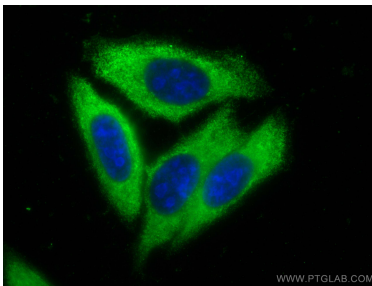
Various lysates were subjected to SDS PAGE followed by western blot with 68038-1-Ig (ZFP36L1 antibody) at dilution of 1:3000 incubated at room temperature for 1.5 hours. The membrane was stripped and reblotted with HRP-conjugated Beta Actin Monoclonal antibody (HRP-66009) as loading control. This data was developed using the same antibody clone with 68038-1-PBS in a different storage buffer formulation.



HSC-T6 cells were subjected to SDS PAGE followed by western blot with 68038-1-Ig (ZFP36L1 antibody) at dilution of 1:3000 incubated at room temperature for 1.5 hours. This data was developed using the same antibody clone with 68038-1-PBS in a different storage buffer formulation.



PC-12 cells were subjected to SDS PAGE followed by western blot with 68038-1-Ig (ZFP36L1 antibody) at dilution of 1:3000 incubated at room temperature for 1.5 hours. This data was developed using the same antibody clone with 68038-1-PBS in a different storage buffer formulation.



Immunofluorescent analysis of (-20°C Ethanol) fixed HepG2 cells using ZFP36L1 antibody (68038-1-Ig, Clone: 1H6G6) at dilution of 1:400 and CoraLite®488-Conjugated AffiniPure Goat Anti-Mouse IgG(H+L). This data was developed using the same antibody clone with 68038-1-PBS in a different storage buffer formulation.