

For Research Use Only

# ALDH3A1 Monoclonal antibody, PBS Only



Catalog Number: 68036-1-PBS

Featured Product

## Basic Information

Catalog Number:

68036-1-PBS

Size:

100ug, Concentration: 1 mg/ml by Nanodrop;

Source:

Mouse

Isotype:

IgG1

Immunogen Catalog Number:

AG8125

GenBank Accession Number:

BC004370

GeneID (NCBI):

218

UNIPROT ID:

P30838

Full Name:

aldehyde dehydrogenase 3 family, memberA1

Calculated MW:

50 kDa

Observed MW:

50 kDa

Purification Method:

Protein G purification

CloneNo.:

1D4G7

## Applications

Tested Applications:

WB, IF, IHC, ELISA

Species Specificity:

Human

## Background Information

ALDH3A1 (Aldehyde dehydrogenase, dimeric NADP-preferring), also named as ALDH3, is a member of the ALDH superfamily, which consists of NAD(P)<sup>+</sup>-dependent enzymes that catalyse the oxidation of a wide variety of endogenously produced and exogenous aldehydes to their corresponding acids. It is expressed at high concentrations in the mammalian cornea and it is believed that it protects this vital tissue and the rest of the eye against UVlight-induced damage. (PMID:12943535). It can exist as a dimer (PMID:16919242).

## Storage

Storage:

Store at -80°C.

Storage Buffer:

PBS only

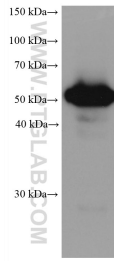
For technical support and original validation data for this product please contact:

T: 1 (888) 4PTGLAB (1-888-478-4522) (toll free in USA), or 1(312) 455-8498 (outside USA)

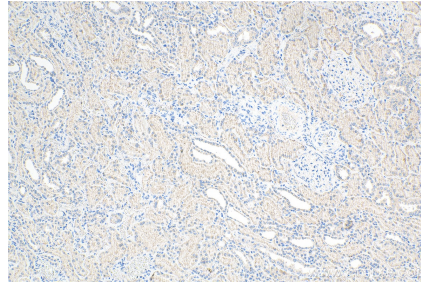
E: [proteintech@ptglab.com](mailto:proteintech@ptglab.com)  
W: [ptglab.com](http://ptglab.com)

This product is exclusively available under Proteintech Group brand and is not available to purchase from any other manufacturer.

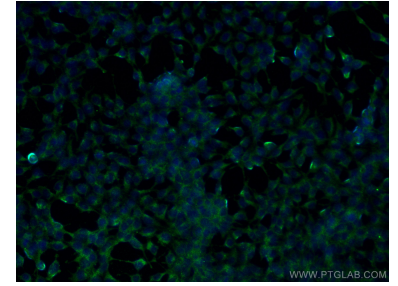
## Selected Validation Data



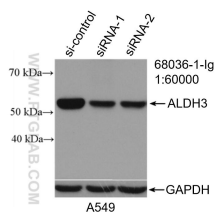
A549 cells were subjected to SDS PAGE followed by western blot with 68036-1-Ig (ALDH3A1 antibody) at dilution of 1:20000 incubated at room temperature for 1.5 hours. This data was developed using the same antibody clone with 68036-1-PBS in a different storage buffer formulation.



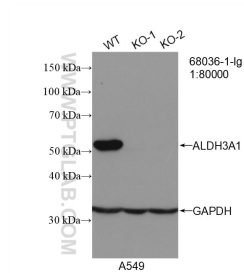
Immunohistochemical analysis of paraffin-embedded human kidney tissue slide using 68036-1-Ig (ALDH3A1 antibody) at dilution of 1:2000 (under 10x Lens). Heat mediated antigen retrieval with Tris-EDTA buffer (pH 9.0). This data was developed using the same antibody clone with 68036-1-PBS in a different storage buffer formulation.



Immunofluorescent analysis of (-20°C Ethanol) fixed HEK-293 cells using ALDH3A1 antibody (68036-1-Ig, Clone: 1D4G7 ) at dilution of 1:400 and CoraLite®488-Conjugated AffiniPure Goat Anti-Mouse IgG(H+L). This data was developed using the same antibody clone with 68036-1-PBS in a different storage buffer formulation.



WB result of ALDH3A1 antibody (68036-1-Ig; 1:60000; incubated at room temperature for 1.5 hours) with sh-Control and sh-ALDH3A1 transfected A549 cells. This data was developed using the same antibody clone with 68036-1-PBS in a different storage buffer formulation.



WB result of ALDH3A1 antibody (68036-1-Ig; 1:80000; room temperature for 1.5 hours) with wild-type and ALDH3A1 knockout A549 cells. This data was developed using the same antibody clone with 68036-1-PBS in a different storage buffer formulation.