

For Research Use Only

ALDH3A1 Monoclonal antibody

Catalog Number: 68036-1-Ig

Featured Product

1 Publications



Basic Information

Catalog Number: 68036-1-Ig	GenBank Accession Number: BC004370	Purification Method: Protein G purification
Size: 150ul , Concentration: 1000 ug/ml by Nanodrop;	GeneID (NCBI): 218	CloneNo.: 1D4G7
Source: Mouse	UNIPROT ID: P30838	Recommended Dilutions: WB 1:5000-1:50000 IHC 1:1000-1:4000 IF/ICC 1:200-1:800
Isotype: IgG1	Full Name: aldehyde dehydrogenase 3 family, memberA1	
Immunogen Catalog Number: AG8125	Calculated MW: 50 kDa	
	Observed MW: 50 kDa	

Applications

Tested Applications: WB, IHC, IF/ICC, ELISA	Positive Controls: WB : A549 cells, LNCaP cells, HeLa cells IHC : human kidney tissue, IF/ICC : HEK-293 cells,
Cited Applications: IF	
Species Specificity: Human	
Cited Species: human	

Note-IHC: suggested antigen retrieval with TE buffer pH 9.0; (*) Alternatively, antigen retrieval may be performed with citrate buffer pH 6.0

Background Information

ALDH3A1 (Aldehyde dehydrogenase, dimeric NADP-preferring), also named as ALDH3, is a member of the ALDH superfamily, which consists of NAD(P)+-dependent enzymes that catalyse the oxidation of a wide variety of endogenously produced and exogenous aldehydes to their corresponding acids. It is expressed at high concentrations in the mammalian cornea and it is believed that it protects this vital tissue and the rest of the eye against UVlight-induced damage.(PMID:12943535). It can exist as a dimer(PMID:16919242).

Notable Publications

Author	Pubmed ID	Journal	Application
Mingshan Zhang	39865725	Adv Healthc Mater	IF

Storage

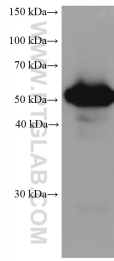
Storage:
Store at -20°C. Stable for one year after shipment.
Storage Buffer:
PBS with 0.02% sodium azide and 50% glycerol pH 7.3.
Aliquoting is unnecessary for -20°C storage

*** 20ul sizes contain 0.1% BSA

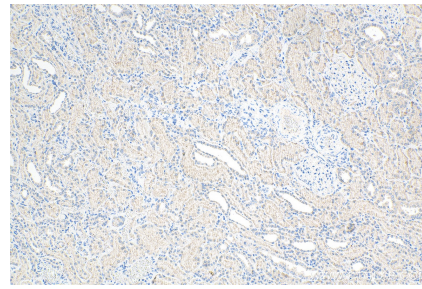
For technical support and original validation data for this product please contact:
T: 1 (888) 4PTGLAB (1-888-478-4522) (toll free in USA), or 1(312) 455-8498 (outside USA)
E: proteintech@ptglab.com
W: ptglab.com

This product is exclusively available under Proteintech Group brand and is not available to purchase from any other manufacturer.

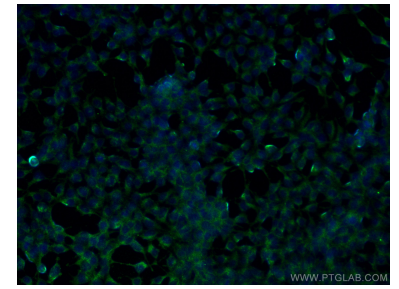
Selected Validation Data



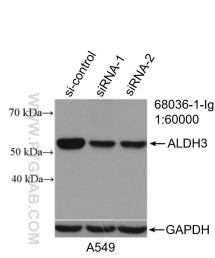
A549 cells were subjected to SDS PAGE followed by western blot with 68036-1-Ig (ALDH3A1 antibody) at dilution of 1:20000 incubated at room temperature for 1.5 hours.



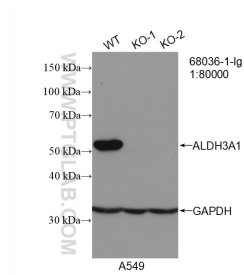
Immunohistochemical analysis of paraffin-embedded human kidney tissue slide using 68036-1-Ig (ALDH3A1 antibody) at dilution of 1:2000 (under 10x Lens). Heat mediated antigen retrieval with Tris-EDTA buffer (pH 9.0).



Immunofluorescent analysis of (-20°C Ethanol) fixed HEK-293 cells using ALDH3A1 antibody (68036-1-Ig, Clone: 1D4G7) at dilution of 1:400 and CoraLite®488-Conjugated Goat Anti-Mouse IgG(H+L).



WB result of ALDH3A1 antibody (68036-1-Ig; 1:60000; incubated at room temperature for 1.5 hours) with sh-Control and sh-ALDH3A1 transfected A549 cells.



WB result of ALDH3A1 antibody (68036-1-Ig; 1:80000; room temperature for 1.5 hours) with wild-type and ALDH3A1 knockout A549 cells.