

For Research Use Only

CD35 Monoclonal antibody, PBS Only

Catalog Number: 68033-1-PBS



Basic Information

Catalog Number: 68033-1-PBS	GenBank Accession Number: NM_000573	Purification Method: Protein A purification
Size: 100ug, Concentration: 1mg/ml by Nanodrop;	GeneID (NCBI): 1378	CloneNo.: 1B8E6
Source: Mouse	ENSEMBL Gene ID: ENSG00000203710	
Isotype: IgG1	UNIPROT ID: P17927	
Immunogen Catalog Number: AG30268	Full Name: complement component (3b/4b) receptor 1 (Knops blood group)	
	Calculated MW: 224 kDa	

Applications

Tested Applications:
IHC, IF-P, Indirect ELISA

Species Specificity:
human

Background Information

CD35, also known as complement receptor type 1 (CR1) or C3b/C4b receptor, is a single-chain glycoprotein consisting of 30 repeating homologous protein domains known as short consensus repeats (~60 amino acids each) followed by transmembrane and cytoplasmic domains (PMID: 8765013). CD35 is variably expressed by granulocytes, monocytes, B cells, some T cells, erythrocytes, follicular dendritic cells, Langerhans cells, and glomerular podocytes (PMID: 19004497). CD35 acts as a receptor for C3b and C4b and plays important roles in the regulation of the complement cascade and clearance of immune complexes. A soluble form of CD35 has been found in plasma (PMID: 3156931). It has been reported that soluble CD35 is produced by a proteolytic cleavage in the C-terminal region of CD35 transmembrane domain (PMID: 9405292).

Storage

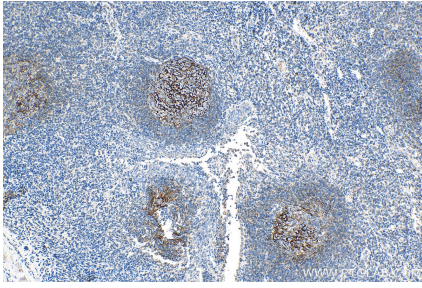
Storage:
Store at -80°C.

Storage Buffer:
PBS Only

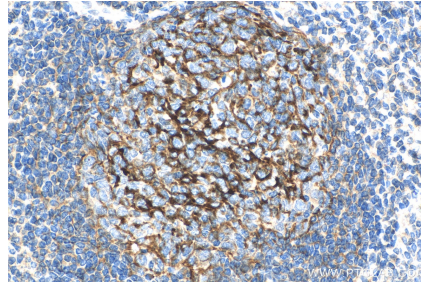
For technical support and original validation data for this product please contact:
T: 1 (888) 4PTGLAB (1-888-478-4522) (toll free in USA), or 1(312) 455-8498 (outside USA) E: proteintech@ptglab.com
W: ptglab.com

This product is exclusively available under Proteintech Group brand and is not available to purchase from any other manufacturer.

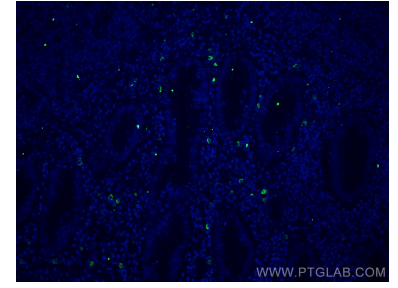
Selected Validation Data



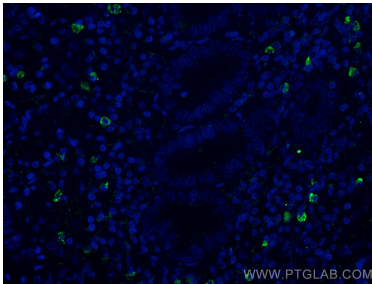
Immunohistochemical analysis of paraffin-embedded human tonsillitis tissue slide using 68033-1-Ig (CD35 antibody) at dilution of 1:1100 (under 10x lens). Heat mediated antigen retrieval with Tris-EDTA buffer (pH 9.0). This data was developed using the same antibody clone with 68033-1-PBS in a different storage buffer formulation.



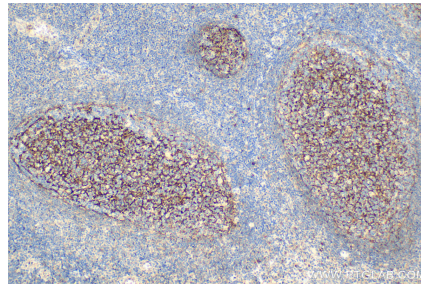
Immunohistochemical analysis of paraffin-embedded human tonsillitis tissue slide using 68033-1-Ig (CD35 antibody) at dilution of 1:1100 (under 40x lens). Heat mediated antigen retrieval with Tris-EDTA buffer (pH 9.0). This data was developed using the same antibody clone with 68033-1-PBS in a different storage buffer formulation.



Immunofluorescent analysis of (4% PFA) fixed human appendicitis tissue using CD35 antibody (68033-1-Ig, Clone: 1B8E6) at dilution of 1:400 and CoraLite@488-Conjugated AffiniPure Goat Anti-Mouse IgG(H+L). This data was developed using the same antibody clone with 68033-1-PBS in a different storage buffer formulation.



Immunofluorescent analysis of (4% PFA) fixed human appendicitis tissue using CR1 antibody (68033-1-Ig, Clone: 1B8E6) at dilution of 1:400 and CoraLite@488-Conjugated AffiniPure Goat Anti-Mouse IgG(H+L). This data was developed using the same antibody clone with 68033-1-PBS in a different storage buffer formulation.



Immunohistochemical analysis of paraffin-embedded human tonsillitis tissue slide using 68033-1-Ig (CD35 antibody) at dilution of 1:3000 (under 10x lens). Heat mediated antigen retrieval with Tris-EDTA buffer (pH 9.0). This data was developed using the same antibody clone with 68033-1-PBS in a different storage buffer formulation.