

For Research Use Only

# DUSP22 Monoclonal antibody, PBS Only



Catalog Number: 68032-1-PBS

## Basic Information

<b>Catalog Number:</b> 68032-1-PBS	<b>GenBank Accession Number:</b> BC022847	<b>Purification Method:</b> Protein A purification
<b>Size:</b> 100ug , Concentration: 1 mg/ml by Nanodrop;	<b>GeneID (NCBI):</b> 56940	<b>CloneNo.:</b> 3B8F1
<b>Source:</b> Mouse	<b>UNIPROT ID:</b> Q9NRW4	
<b>Isotype:</b> IgG2a	<b>Full Name:</b> dual specificity phosphatase 22	
<b>Immunogen Catalog Number:</b> AG9831	<b>Calculated MW:</b> 184 aa, 21 kDa	
	<b>Observed MW:</b> 21 kDa	

## Applications

**Tested Applications:**  
WB, IF, Indirect ELISA

**Species Specificity:**  
Human, Mouse, Rat, Rabbit

## Background Information

DUSP22 (Dual specificity protein phosphatase 22) is also named as JSP1, LMWDSP2, MKPX. It has been demonstrated to belong to a new subgroup of small DSPs anchored at the membranes by an N-terminal myristic acid moiety and DUSP22 play a regulatory role in the JNK or p38 MAPK pathways (PMID:17384676). It has 2 isoforms produced by alternative splicing with the molecular weight of 21 kDa and 23 kDa.

## Storage

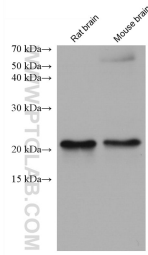
**Storage:**  
Store at -80°C.

**Storage Buffer:**  
PBS Only

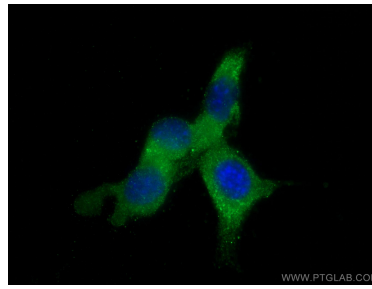
For technical support and original validation data for this product please contact:  
T: 1 (888) 4PTGLAB (1-888-478-4522) (toll free in USA), or 1(312) 455-8498 (outside USA)      E: proteintech@ptglab.com  
W: ptglab.com

**This product is exclusively available under Proteintech Group brand and is not available to purchase from any other manufacturer.**

## Selected Validation Data



Various lysates were subjected to SDS PAGE followed by western blot with 68032-1-Ig (DUSP22 antibody) at dilution of 1:5000 incubated at room temperature for 1.5 hours. This data was developed using the same antibody clone with 68032-1-PBS in a different storage buffer formulation.



Immunofluorescent analysis of (-20°C Methanol) fixed NIH/3T3 cells using DUSP22 antibody (68032-1-Ig, Clone: 3B8F1) at dilution of 1:800 and CoraLite®488-Conjugated AffiniPure Goat Anti-Mouse IgG(H+L). This data was developed using the same antibody clone with 68032-1-PBS in a different storage buffer formulation.