

For Research Use Only

# CRMP1 Monoclonal antibody, PBS Only



Catalog Number: 68021-1-PBS

## Basic Information

<b>Catalog Number:</b> 68021-1-PBS	<b>GenBank Accession Number:</b> BC000252	<b>Purification Method:</b> Protein A purification
<b>Size:</b> 100ug , Concentration: 1 mg/ml by Nanodrop;	<b>GeneID (NCBI):</b> 1400	<b>CloneNo.:</b> 2F4G5
<b>Source:</b> Mouse	<b>UNIPROT ID:</b> Q14194	
<b>Isotype:</b> IgG2a	<b>Full Name:</b> collapsin response mediator protein 1	
<b>Immunogen Catalog Number:</b> AG30090	<b>Calculated MW:</b> 62 kDa	
	<b>Observed MW:</b> 62 kDa	

## Applications

**Tested Applications:**  
WB, IHC, Indirect ELISA

**Species Specificity:**  
Mouse, Rat, Rabbit, Pig, Chicken, Human

## Background Information

CRMP1 (Collapsin response mediator protein 1) is also named as DPYSL1, ULIP3, DRP-1 and belongs to the collapsin response mediator protein family, which are a family of five cytoplasmic proteins predominantly expressed in the developing nervous system. CRMP1, the predicted 62 kDa protein and its 74 kDa isoform corresponding to its N-terminal splice variant already described for embryonic, neonatal, and adult brain of the rat are evidenced in the cortex of adult mouse (PMID:15834957). This protein is involved in invasion, and aggressiveness of prolactin pituitary tumors.

## Storage

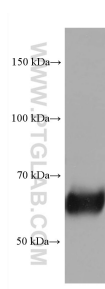
**Storage:**  
Store at -80°C.

**Storage Buffer:**  
PBS Only

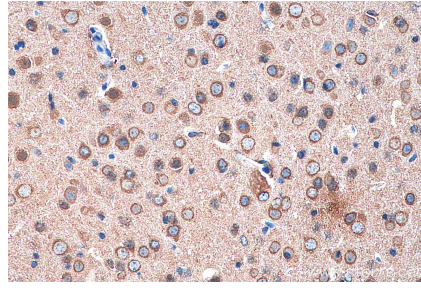
For technical support and original validation data for this product please contact:  
T: 1 (888) 4PTGLAB (1-888-478-4522) (toll free in USA), or 1(312) 455-8498 (outside USA)      E: proteintech@ptglab.com  
W: ptglab.com

This product is exclusively available under Proteintech Group brand and is not available to purchase from any other manufacturer.

## Selected Validation Data



mouse cerebellum tissue were subjected to SDS PAGE followed by western blot with 68021-1-Ig (CRMP1 antibody) at dilution of 1:25000 incubated at room temperature for 1.5 hours. This data was developed using the same antibody clone with 68021-1-PBS in a different storage buffer formulation.



Immunohistochemical analysis of paraffin-embedded mouse brain tissue slide using 68021-1-Ig (CRMP1 antibody) at dilution of 1:10000 (under 40x lens). Heat mediated antigen retrieval with Tris-EDTA buffer (pH 9.0). This data was developed using the same antibody clone with 68021-1-PBS in a different storage buffer formulation.