

For Research Use Only

Alpha B Crystallin Monoclonal antibody, PBS Only



Catalog Number: 68001-1-PBS

Basic Information

Catalog Number: 68001-1-PBS	GenBank Accession Number: BC007008	Purification Method: Protein A purification
Size: 100ug, Concentration: 1 mg/ml by Nanodrop;	GeneID (NCBI): 1410	CloneNo.: 1B4C3
Source: Mouse	UNIPROT ID: P02511	
Isotype: IgG2b	Full Name: crystallin, alpha B	
Immunogen Catalog Number: AG8656	Calculated MW: 175 aa, 20 kDa	
	Observed MW: 20-22 kDa	

Applications

Tested Applications:
WB, IHC, Indirect ELISA

Species Specificity:
Human, mouse, rat

Background Information

Alpha B-crystallin, encoded by CRYAB gene, is multifunctional, serving as both a major structural protein in the lens and a small heat-shock protein in other tissues in mammals. Alpha B-crystallin may contribute to the transparency and refractive index of the lens. Single nucleotide polymorphisms (SNPs) in the promoter region of CRYAB gene have been associated with multiple sclerosis. Mutations in the CRYAB gene cause distinct clinical phenotypes including isolated posterior polar cataract, myofibrillar myopathy, cardiomyopathy, or a multisystemic disorder combining all these features. Impairment of alpha-B crystallin dimerization may be relevant to the pathogenesis of these disorders.

Storage

Storage:
Store at -80°C.

Storage Buffer:
PBS Only

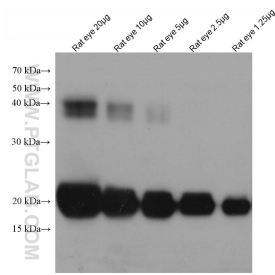
For technical support and original validation data for this product please contact:

T: 1 (888) 4PTGLAB (1-888-478-4522) (toll free in USA), or 1(312) 455-8498 (outside USA)

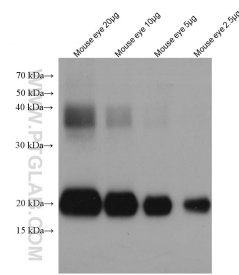
E: proteintech@ptglab.com
W: ptglab.com

This product is exclusively available under Proteintech Group brand and is not available to purchase from any other manufacturer.

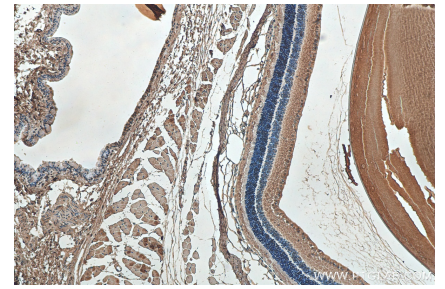
Selected Validation Data



rat eye tissue were subjected to SDS PAGE followed by western blot with 68001-1-Ig (aB-Crystallin antibody) at dilution of 1:20000 incubated at room temperature for 1.5 hours. This data was developed using the same antibody clone with 68001-1-PBS in a different storage buffer formulation.



mouse eye tissue were subjected to SDS PAGE followed by western blot with 68001-1-Ig (aB-Crystallin antibody) at dilution of 1:20000 incubated at room temperature for 1.5 hours. This data was developed using the same antibody clone with 68001-1-PBS in a different storage buffer formulation.



Immunohistochemical analysis of paraffin-embedded mouse eye tissue slide using 68001-1-Ig (Alpha B Crystallin antibody) at dilution of 1:2000 (under 10x lens). Heat mediated antigen retrieval with Tris-EDTA buffer (pH 9.0). This data was developed using the same antibody clone with 68001-1-PBS in a different storage buffer formulation.