

For Research Use Only

# MCM6 Monoclonal antibody, PBS Only



Catalog Number: 67989-1-PBS

Featured Product

## Basic Information

**Catalog Number:**

67989-1-PBS

**Size:**

100ug, Concentration: 1 mg/ml by Nanodrop;

**Source:**

Mouse

**Isotype:**

IgG1

**Immunogen Catalog Number:**

AG4354

**GenBank Accession Number:**

BC032374

**GeneID (NCBI):**

4175

**UNIPROT ID:**

Q14566

**Full Name:**

minichromosome maintenance complex component 6

**Calculated MW:**

821 aa, 93 kDa

**Observed MW:**

105 kDa

**Purification Method:**

Protein G purification

**CloneNo.:**

2E12H1

## Applications

**Tested Applications:**

WB, IF, IHC, Indirect ELISA

**Species Specificity:**

Human, Rat, Mouse

## Background Information

The MCM genes were firstly identified in yeast defective in minichromosome maintenance and have since been shown to have roles in the progression of the cell cycle, and most of them are cell division control genes [PMID: 18096807]. MCM2-7 complex are suggested to be 'DNA licensing factors' which bind to the DNA after mitosis and enable DNA replication before being removed during S phase. Mini-chromosome maintenance 6 (MCM6) is one component of the MCM2-7 complex which is the putative replicative helicase essential for 'once per cell cycle' DNA replication initiation and elongation in eukaryotic cells [PMID: 9305914]. MCM6 single subunit forms homohexamer and contains an ATP-dependent and replication fork stimulated 3' to 5' DNA unwinding activity along with intrinsic DNA-dependent ATPase and ATP-binding activities [PMID: 21336027]. The calculated molecular weight of MCM6 is 92 kDa, but the modified MCM6 is about 105 kDa.

## Storage

**Storage:**

Store at -80°C.

**Storage Buffer:**

PBS Only

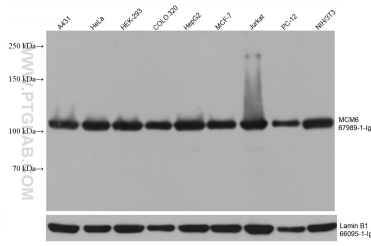
For technical support and original validation data for this product please contact:

T: 1 (888) 4PTGLAB (1-888-478-4522) (toll free in USA), or 1(312) 455-8498 (outside USA)

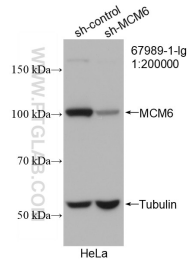
E: [proteintech@ptglab.com](mailto:proteintech@ptglab.com)  
W: [ptglab.com](http://ptglab.com)

This product is exclusively available under Proteintech Group brand and is not available to purchase from any other manufacturer.

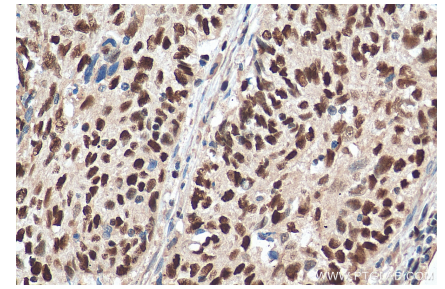
## Selected Validation Data



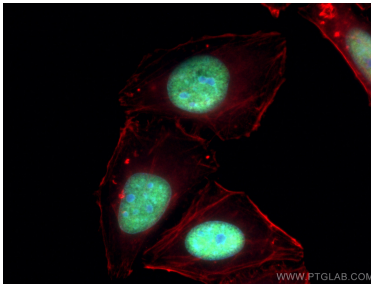
Various lysates were subjected to SDS PAGE followed by western blot with 67989-1-Ig (MCM6 antibody) at dilution of 1:50000 incubated at room temperature for 1.5 hours. The membrane was stripped and reblotted with Lamin B1 Monoclonal antibody (66095-1-Ig) as loading control. This data was developed using the same antibody clone with 67989-1-PBS in a different storage buffer formulation.



WB result of MCM6 antibody (67989-1-Ig; 1:200000; incubated at room temperature for 1.5 hours) with sh-Control and sh-MCM6 transfected HeLa cells. This data was developed using the same antibody clone with 67989-1-PBS in a different storage buffer formulation.



Immunohistochemical analysis of paraffin-embedded human cervical cancer tissue slide using 67989-1-Ig (MCM6 antibody) at dilution of 1:200 (under 40x lens). Heat mediated antigen retrieval with Tris-EDTA buffer (pH 9.0). This data was developed using the same antibody clone with 67989-1-PBS in a different storage buffer formulation.



Immunofluorescent analysis of (-20°C Methanol) fixed HepG2 cells using MCM6 antibody (67989-1-Ig, Clone: 2E12H1) at dilution of 1:4000 and CoraLite@488-Conjugated AffiniPure Goat Anti-Mouse IgG(H+L), CoraLite@594 Beta Actin antibody (CL594-66009, Clone: 2D4H5, red). This data was developed using the same antibody clone with 67989-1-PBS in a different storage buffer formulation.