

For Research Use Only

TEX14 Monoclonal antibody, PBS Only



Catalog Number: 67982-1-PBS

Basic Information

Catalog Number: 67982-1-PBS	GenBank Accession Number: BC040526	Purification Method: Protein A purification
Size: 100ug , Concentration: 1 mg/ml by Nanodrop;	GeneID (NCBI): 56155	CloneNo.: 1A11D6
Source: Mouse	UNIPROT ID: Q8IWB6	
Isotype: IgG2a	Full Name: testis expressed 14	
Immunogen Catalog Number: AG13143	Calculated MW: 957aa,107 kDa; 1497aa,168 kDa	
	Observed MW: 180 kDa	

Applications

Tested Applications:
WB, IF, Indirect ELISA

Species Specificity:
Human, mouse, rat, rabbit

Background Information

Tex14 is required both for the formation of intercellular bridges during meiosis and for kinetochore-microtubule attachment during mitosis. Intercellular bridges are evolutionarily conserved structures that connect differentiating germ cells and are required for spermatogenesis and male fertility. Tex14 acts by promoting the conversion of midbodies into intercellular bridges via its interaction with CEP55: interaction with CEP55 inhibits the interaction between CEP55 and PDCD6IP/ALIX and TSG101, blocking cell abscission and leading to transform midbodies into intercellular bridges. Tex14 also plays a role during mitosis: recruited to kinetochores by PLK1 during early mitosis and regulates the maturation of the outer kinetochores and microtubule attachment.

Storage

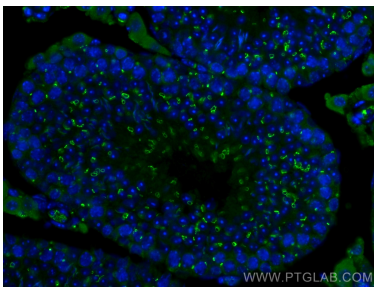
Storage:
Store at -80°C.

Storage Buffer:
PBS Only

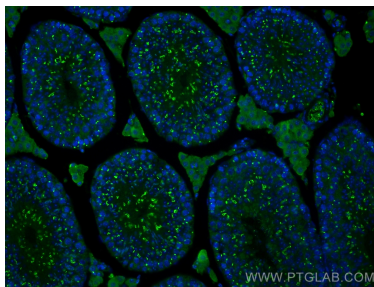
For technical support and original validation data for this product please contact:
T: 1 (888) 4PTGLAB (1-888-478-4522) (toll free in USA), or 1(312) 455-8498 (outside USA) E: proteintech@ptglab.com
W: ptglab.com

This product is exclusively available under Proteintech Group brand and is not available to purchase from any other manufacturer.

Selected Validation Data



Immunofluorescent analysis of (4% PFA) fixed mouse testis tissue using TEX14 antibody (67982-1-Ig, Clone: 1A11D6) at dilution of 1:400 and CoraLite®488-Conjugated AffiniPure Goat Anti-Mouse IgG(H+L). This data was developed using the same antibody clone with 67982-1-PBS in a different storage buffer formulation.



Immunofluorescent analysis of (4% PFA) fixed mouse testis tissue using TEX14 antibody (67982-1-Ig, Clone: 1A11D6) at dilution of 1:400 and CoraLite®488-Conjugated AffiniPure Goat Anti-Mouse IgG(H+L). This data was developed using the same antibody clone with 67982-1-PBS in a different storage buffer formulation.



rat testis tissue were subjected to SDS PAGE followed by western blot with 67982-1-Ig (TEX14 antibody) at dilution of 1:10000 incubated at room temperature for 1.5 hours. This data was developed using the same antibody clone with 67982-1-PBS in a different storage buffer formulation.