

For Research Use Only

# MYD88 Monoclonal antibody, PBS Only

Catalog Number: 67969-1-PBS



## Basic Information

<b>Catalog Number:</b> 67969-1-PBS	<b>GenBank Accession Number:</b> BC013589	<b>Purification Method:</b> Protein A purification
<b>Size:</b> 100ug , Concentration: 1mg/ml by Nanodrop;	<b>GeneID (NCBI):</b> 4615	<b>CloneNo.:</b> 2E10D3
<b>Source:</b> Mouse	<b>UNIPROT ID:</b> Q99836	
<b>Isotype:</b> IgG2b	<b>Full Name:</b> myeloid differentiation primary response gene (88)	
<b>Immunogen Catalog Number:</b> AG27659	<b>Calculated MW:</b> 33 kDa	
	<b>Observed MW:</b> 33 kDa	

## Applications

**Tested Applications:**  
WB, IHC, IF/ICC, IF-P, ELISA

**Species Specificity:**  
human, mouse, rat, pig, rabbit

## Background Information

MYD88 is a cytosolic adaptor protein that plays a central role in the innate and adaptive immune response. MYD88 is the key adaptor protein for the interleukin-1 receptor (IL-1R) and most Toll-like receptors (TLRs), which are essential for innate immunity and pathogen-associated molecular pattern recognition. Mutations in the MyD88 gene lead to the development of cancer in humans and mice suggesting that MyD88 also plays a cell autonomous role in tissue homeostasis.

## Storage

**Storage:**  
Store at -80°C.

**Storage Buffer:**  
PBS Only

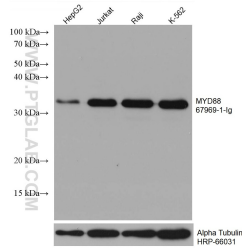
For technical support and original validation data for this product please contact:

T: 1 (888) 4PTGLAB (1-888-478-4522) (toll free in USA), or 1(312) 455-8498 (outside USA)

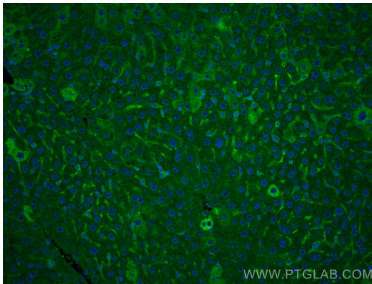
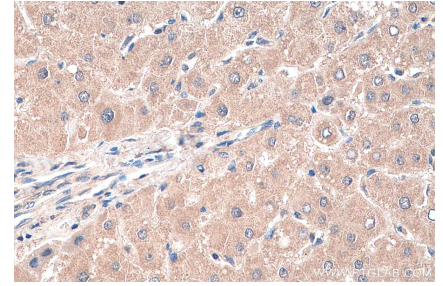
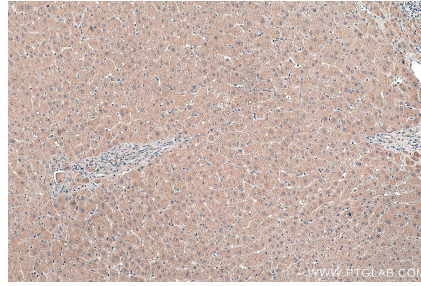
E: [proteintech@ptglab.com](mailto:proteintech@ptglab.com)  
W: [ptglab.com](http://ptglab.com)

**This product is exclusively available under Proteintech Group brand and is not available to purchase from any other manufacturer.**

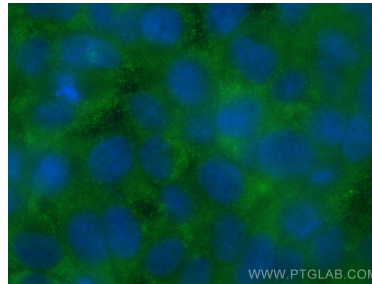
## Selected Validation Data



Various lysates were subjected to SDS PAGE followed by western blot with 67969-1-Ig (MYD88 antibody) at dilution of 1:5000 incubated at room temperature for 1.5 hours. The membrane was stripped and reblotted with HRP-conjugated Alpha Tubulin Monoclonal antibody (HRP-66031) as loading control. This data was developed using the same antibody clone with 67969-1-PBS in a different storage buffer formulation.



Immunofluorescent analysis of (4% PFA) fixed mouse liver tissue using MYD88 antibody (67969-1-Ig, Clone: 2E10D3) at dilution of 1:400 and CoraLite@488-Conjugated AffiniPure Goat Anti-Mouse IgG(H+L). This data was developed using the same antibody clone with 67969-1-PBS in a different storage buffer formulation.



Immunofluorescent analysis of (-20°C Methanol) fixed A431 cells using MYD88 antibody (67969-1-Ig, Clone: 2E10D3) at dilution of 1:400 and CoraLite@488-Conjugated Goat Anti-Mouse IgG(H+L) (SA00013-1). This data was developed using the same antibody clone with 67969-1-PBS in a different storage buffer formulation.