

For Research Use Only

Flotillin 1 Monoclonal antibody

Catalog Number: 67968-1-Ig



Basic Information

Catalog Number: 67968-1-Ig	GenBank Accession Number: BC001146	Purification Method: Protein A purification
Size: 150ul , Concentration: 1000 ug/ml by Nanodrop;	GeneID (NCBI): 10211	CloneNo.: 1D6C6
Source: Mouse	UNIPROT ID: O75955	Recommended Dilutions: WB 1:5000-1:50000
Isotype: IgG2b	Full Name: flotillin 1	
Immunogen Catalog Number: AG8694	Calculated MW: 47 kDa	
	Observed MW: 47 kDa	

Applications

Tested Applications:

WB, FC (Intra), ELISA

Species Specificity:

human, mouse, rat, pig, rabbit

Positive Controls:

WB : LNCaP cells, Raji cells, Jurkat cells, MOLT-4 cells, human peripheral blood platelets, pig brain tissue, rabbit brain tissue, rat brain tissue, mouse brain tissue

Background Information

Flotillins are membrane-associated proteins that contain two homologous isoforms, flotillin 1 (FLOT1) and flotillin 2 (FLOT2). They are highly conserved and widely expressed proteins that commonly used as markers of lipid rafts. Flotillins are involved in various signaling pathways, cell adhesion, membrane trafficking and axonal growth.

Storage

Storage:

Store at -20°C. Stable for one year after shipment.

Storage Buffer:

PBS with 0.02% sodium azide and 50% glycerol pH 7.3.

Aliquoting is unnecessary for -20°C storage

*** 20ul sizes contain 0.1% BSA

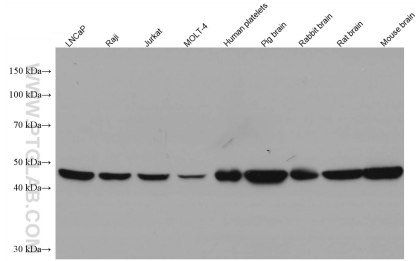
For technical support and original validation data for this product please contact:

T: 1 (888) 4PTGLAB (1-888-478-4522) (toll free in USA), or 1(312) 455-8498 (outside USA)

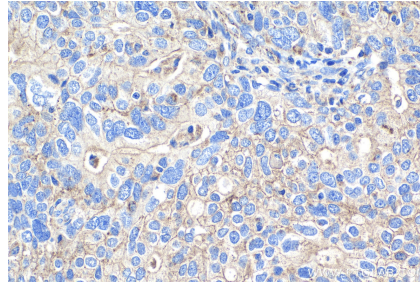
E: proteintech@ptglab.com
W: ptglab.com

This product is exclusively available under Proteintech Group brand and is not available to purchase from any other manufacturer.

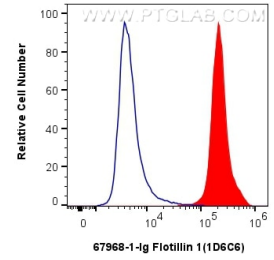
Selected Validation Data



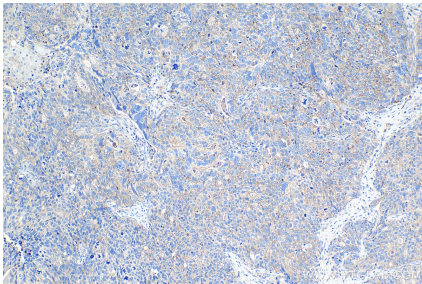
Various lysates were subjected to SDS PAGE followed by western blot with 67968-1-Ig (Flotillin 1 antibody) at dilution of 1:20000 incubated at room temperature for 1.5 hours.



Immunohistochemical analysis of paraffin-embedded human ovary tumor tissue slide using 67968-1-Ig (Flotillin 1 antibody) at dilution of 1:4000 (under 40x lens). Heat mediated antigen retrieval with Tris-EDTA buffer (pH 9.0).



1×10^6 Raji cells were intracellularly stained with 0.2 ug Flotillin 1 Monoclonal antibody (67968-1-Ig, Clone:1D6C6) and CoraLite®488-Conjugated Goat Anti-Mouse IgG(H+L) (SA00013-1)(red), or 0.2 ug Mouse IgG2b isotype control Mouse McAb (66360-3-Ig, Clone: 11B8C4) (blue). Cells were fixed with 4% PFA and permeabilized with Flow Cytometry Perm Buffer (PF00011-C).



Immunohistochemical analysis of paraffin-embedded human ovary tumor tissue slide using 67968-1-Ig (Flotillin 1 antibody) at dilution of 1:4000 (under 10x lens). Heat mediated antigen retrieval with Tris-EDTA buffer (pH 9.0).