

For Research Use Only

CCT6B Monoclonal antibody, PBS Only



Catalog Number: 67961-1-PBS

Basic Information

Catalog Number: 67961-1-PBS	GenBank Accession Number: BC027591	Purification Method: Protein G purification
Size: 100ug, Concentration: 1mg/ml by Nanodrop;	GeneID (NCBI): 10693	CloneNo.: 2F11A9
Source: Mouse	UNIPROT ID: Q92526	
Isotype: IgG1	Full Name: chaperonin containing TCP1, subunit 6B (zeta 2)	
Immunogen Catalog Number: AG31295	Calculated MW: 530 aa, 58 kDa	
	Observed MW: 53-58 kDa	

Applications

Tested Applications:
WB, IHC, IF/ICC, Indirect ELISA

Species Specificity:
human, mouse, rat

Background Information

CCT6B, also named as CCT-zeta-2, TCP-1-zeta-like, CCT-zeta-like, Testis-specific Tcp20 and Testis-specific protein TSA303, belongs to the TCP-1 chaperonin family. CCT6B is a molecular chaperone which assists the folding of proteins upon ATP hydrolysis. It is known to play a role, in vitro, in the folding of actin and tubulin. CCT6B has 3 isoforms with the molecular mass of 53-58 kDa.

Storage

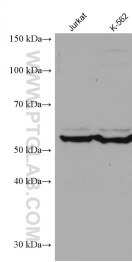
Storage:
Store at -80°C.

Storage Buffer:
PBS Only

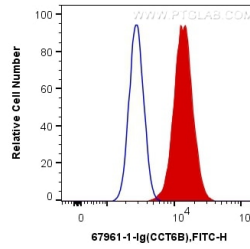
For technical support and original validation data for this product please contact:
T: 1 (888) 4PTGLAB (1-888-478-4522) (toll free in USA), or 1(312) 455-8498 (outside USA) E: proteintech@ptglab.com
W: ptglab.com

This product is exclusively available under Proteintech Group brand and is not available to purchase from any other manufacturer.

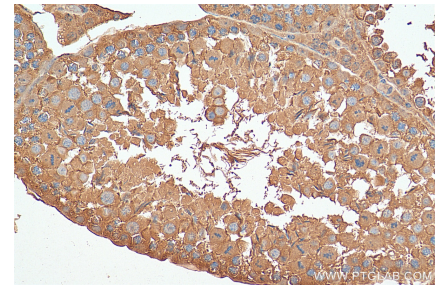
Selected Validation Data



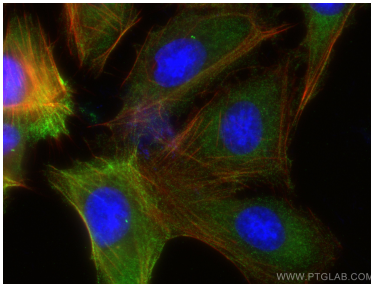
Various lysates were subjected to SDS PAGE followed by western blot with 67961-1-Ig (CCT6B antibody) at dilution of 1:5000 incubated at room temperature for 1.5 hours. This data was developed using the same antibody clone with 67961-1-PBS in a different storage buffer formulation.



1×10^6 U2OS cells were intracellularly stained with 0.4 ug Anti-Human CCT6B (67961-1-Ig, Clone:2F11A9) and CoraLite®488-Conjugated AffiniPure Goat Anti-Mouse IgG(H+L) at dilution 1:1000 (red), or 0.4 ug Control Antibody. Cells were fixed with 4% PFA and permeabilized with Flow Cytometry Perm Buffer (PF00011-C). This data was developed using the same antibody clone with 67961-1-PBS in a different storage buffer formulation.



Immunohistochemical analysis of paraffin-embedded mouse testis tissue slide using 67961-1-Ig (CCT6B antibody) at dilution of 1:200 (under 40x lens). Heat mediated antigen retrieval with Tris-EDTA buffer (pH 9.0). This data was developed using the same antibody clone with 67961-1-PBS in a different storage buffer formulation.



Immunofluorescent analysis of (-20°C Ethanol) fixed U2OS cells using CCT6B antibody (67961-1-Ig, Clone: 2F11A9) at dilution of 1:800 and CoraLite®488-Conjugated AffiniPure Goat Anti-Mouse IgG(H+L), CL594-Phalloidin (red). This data was developed using the same antibody clone with 67961-1-PBS in a different storage buffer formulation.