

For Research Use Only

PARG Monoclonal antibody, PBS Only



Catalog Number: 67946-1-PBS

Basic Information

Catalog Number: 67946-1-PBS	GenBank Accession Number: BC052966	Purification Method: Protein A purification
Size: 100ug, Concentration: 1 mg/ml by Nanodrop;	GeneID (NCBI): 8505	CloneNo.: 1H10G10
Source: Mouse	UNIPROT ID: Q86W56	
Isotype: IgG2b	Full Name: poly (ADP-ribose) glycohydrolase	
Immunogen Catalog Number: AG27288	Calculated MW: 111 kDa	
	Observed MW: 111 kDa	

Applications

Tested Applications:
WB, IF, IHC, Indirect ELISA

Species Specificity:
Human

Storage

Storage:
Store at -80°C.

Storage Buffer:
PBS Only

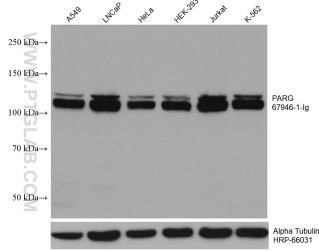
For technical support and original validation data for this product please contact:

T: 1 (888) 4PTGLAB (1-888-478-4522) (toll free
in USA), or 1(312) 455-8498 (outside USA)

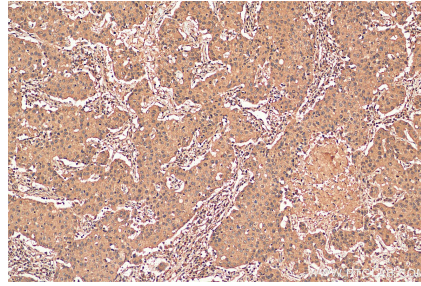
E: proteintech@ptglab.com
W: ptglab.com

This product is exclusively available under Proteintech Group brand and is not available to purchase from any other manufacturer.

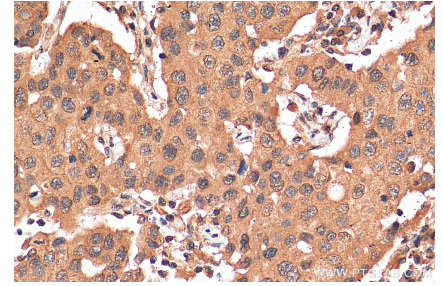
Selected Validation Data



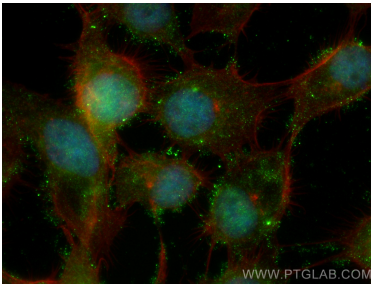
Various lysates were subjected to SDS PAGE followed by western blot with 67946-1-Ig (PARG antibody) at dilution of 1:10000 incubated at room temperature for 1.5 hours. The membrane was stripped and reblotted with HRP-conjugated Alpha Tubulin Monoclonal antibody (HRP-66031) as loading control. This data was developed using the same antibody clone with 67946-1-PBS in a different storage buffer formulation.



Immunohistochemical analysis of paraffin-embedded human breast cancer tissue slide using 67946-1-Ig (PARG antibody) at dilution of 1:500 (under 10x lens). Heat mediated antigen retrieval with Tris-EDTA buffer (pH 9.0). This data was developed using the same antibody clone with 67946-1-PBS in a different storage buffer formulation.



Immunohistochemical analysis of paraffin-embedded human breast cancer tissue slide using 67946-1-Ig (PARG antibody) at dilution of 1:500 (under 40x lens). Heat mediated antigen retrieval with Tris-EDTA buffer (pH 9.0). This data was developed using the same antibody clone with 67946-1-PBS in a different storage buffer formulation.



Immunofluorescent analysis of (4% PFA) fixed A431 cells using PARG antibody (67946-1-Ig, Clone: 1H10G10) at dilution of 1:800 and Coralite® 488-Conjugated AffiniPure Goat Anti-Mouse IgG(H+L), CL594-Phalloidin (red). This data was developed using the same antibody clone with 67946-1-PBS in a different storage buffer formulation.