

For Research Use Only

# ATG16L1 Monoclonal antibody

Catalog Number: 67943-1-Ig **9 Publications**



## Basic Information

<b>Catalog Number:</b> 67943-1-Ig	<b>GenBank Accession Number:</b> BC000061	<b>Purification Method:</b> Protein G purification
<b>Size:</b> 150ul , Concentration: 1000 ug/ml by Nanodrop;	<b>GeneID (NCBI):</b> 55054	<b>CloneNo.:</b> 1G5G7
<b>Source:</b> Mouse	<b>UNIPROT ID:</b> Q676U5	<b>Recommended Dilutions:</b> WB 1:1000-1:6000 IF/ICC 1:200-1:800
<b>Isotype:</b> IgG1	<b>Full Name:</b> ATG16 autophagy related 16-like 1 (S. cerevisiae)	
<b>Immunogen Catalog Number:</b> AG14881	<b>Calculated MW:</b> 607 aa, 68 kDa	
	<b>Observed MW:</b> 68-75 kDa	

## Applications

<b>Tested Applications:</b> WB, IF/ICC, ELISA	<b>Positive Controls:</b> WB : HSC-T6 cells, HepG2 cells, rat lung tissue, PC-12 cells, NIH/3T3 cells, 4T1 cells IF/ICC : HepG2 cells,
<b>Cited Applications:</b> WB, IF, IP	
<b>Species Specificity:</b> Human, mouse, rat	
<b>Cited Species:</b> human, rat, pig	

## Background Information

Human ATG16L1 is a 607 amino acid protein (~68 kDa) comprising three major domains: the N-terminal ATG5 binding domain (ATG5-BD), the central coiled-coil domain (CCD) and a predicted C-terminal WD40-domain. ATG16L1 $\alpha$  and  $\beta$  (Atg16L1 $\alpha$ , 63 kDa; and Atg16L1 $\beta$ , 71 kDa) are the major isoforms expressed in intestinal epithelium and macrophages, and all isoforms encode exon 9, which contains Thr 300. Atg16L1 mediates the cellular degradative process of autophagy and is considered a critical regulator of inflammation based on its genetic association with inflammatory bowel disease. ATG16L1 has been implicated in Crohn's disease. (PMID: 24553140, PMID: 22740627, PMID: 28685931)

## Notable Publications

Author	Pubmed ID	Journal	Application
Nengwen Xia	36311807	Front Immunol	WB
Fang Wen	36117315	Epileptic Disord	WB
Yinfeng Xu	39689715	Immunity	

## Storage

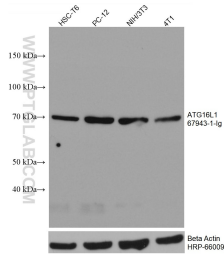
**Storage:**  
Store at -20°C. Stable for one year after shipment.  
**Storage Buffer:**  
PBS with 0.02% sodium azide and 50% glycerol pH 7.3.  
Aliquoting is unnecessary for -20°C storage

\*\*\* 20ul sizes contain 0.1% BSA

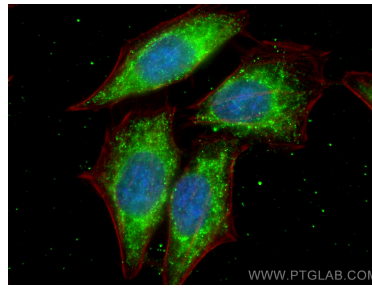
For technical support and original validation data for this product please contact:  
T: 1 (888) 4PTGLAB (1-888-478-4522) (toll free in USA), or 1(312) 455-8498 (outside USA)  
E: proteintech@ptglab.com  
W: ptglab.com

This product is exclusively available under Proteintech Group brand and is not available to purchase from any other manufacturer.

## Selected Validation Data



Various lysates were subjected to SDS PAGE followed by western blot with 67943-1-Ig (ATG16L1 antibody) at dilution of 1:3000 incubated at room temperature for 1.5 hours. The membrane was stripped and reblotted with HRP-conjugated Beta Actin Monoclonal antibody (HRP-66009) as loading control.



Immunofluorescent analysis of (-20°C Ethanol) fixed HepG2 cells using ATG16L1 antibody (67943-1-Ig, Clone: 1G5G7) at dilution of 1:400 and CoraLite®488-Conjugated Goat Anti-Mouse IgG(H+L), CL594-Phalloidin (red).