

For Research Use Only

# SETD1A Monoclonal antibody

Catalog Number: 67936-1-Ig

Featured Product

5 Publications



## Basic Information

<b>Catalog Number:</b> 67936-1-Ig	<b>GenBank Accession Number:</b> NM_014712	<b>Purification Method:</b> Protein G purification
<b>Size:</b> 150ul , Concentration: 1000 µg/ml by Nanodrop;	<b>GeneID (NCBI):</b> 9739	<b>CloneNo.:</b> 1C2G12
<b>Source:</b> Mouse	<b>UNIPROT ID:</b> O15047	<b>Recommended Dilutions:</b> WB 1:5000-1:50000
<b>Isotype:</b> IgG1	<b>Full Name:</b> SET domain containing 1A	
<b>Immunogen Catalog Number:</b> AG30424	<b>Calculated MW:</b> 186 kDa	
	<b>Observed MW:</b> 270 kDa	

## Applications

<b>Tested Applications:</b> WB, ELISA	<b>Positive Controls:</b> WB : HeLa cells, LNCaP cells, K-562 cells, HSC-T6 cells, NIH/3T3 cells, mouse brain tissue, HEK-293 cells, HepG2 cells, Jurkat cells
<b>Cited Applications:</b> WB, IF	
<b>Species Specificity:</b> Human, mouse, rat	
<b>Cited Species:</b> human, mouse	

## Background Information

SETD1A is a SET domain-containing methyltransferase involved in the epigenetic regulation of transcription (PMID:12670868). It is the main catalytic component of a multiprotein complex that methylates lysine 4 of histone H3, a histone mark associated with gene activation (PMID:29937342). Responsible for H3K4me3 enriched promoters and transcriptional programming of inner mass stem cells and neuron progenitors during embryogenesis (PMID:31197650). Does not methylate 'Lys-4' of histone H3 if the neighboring 'Lys-9' residue is already methylated (PubMed:12670868). SETD1A has a calculated molecular weight of 186 kDa, and a 258 kDa band was also reported (PMID: 31076518).

## Notable Publications

Author	Pubmed ID	Journal	Application
Pawel Piatek	38745328	J Inflamm (Lond)	IF
Yali Qin	38750719	Cancer Lett	WB
Nini Zhang	38600123	Nat Commun	WB

## Storage

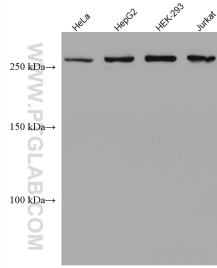
**Storage:**  
Store at -20°C. Stable for one year after shipment.  
**Storage Buffer:**  
PBS with 0.02% sodium azide and 50% glycerol pH 7.3.  
Aliquoting is unnecessary for -20°C storage

\*\*\* 20ul sizes contain 0.1% BSA

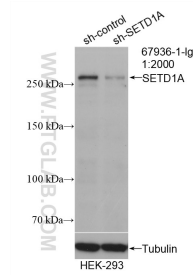
For technical support and original validation data for this product please contact:  
T: 1 (888) 4PTGLAB (1-888-478-4522) (toll free in USA), or 1(312) 455-8498 (outside USA)  
E: proteintech@ptglab.com  
W: ptglab.com

This product is exclusively available under Proteintech Group brand and is not available to purchase from any other manufacturer.

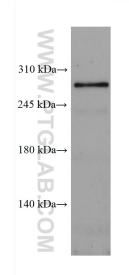
## Selected Validation Data



Various lysates were subjected to SDS PAGE followed by western blot with 67936-1-Ig (SETD1A antibody) at dilution of 1:10000 and incubated at room temperature for 1.5 hours.



WB result of SETD1A antibody (67936-1-Ig; 1:2000; incubated at room temperature for 1.5 hours) with sh-Control and sh-SETD1A transfected HEK-293 cells.



Mouse brain tissue was subjected to SDS PAGE followed by western blot with 67936-1-Ig (SETD1A antibody) at a dilution of 1:3000 and incubated at room temperature for 1.5 hours.