

For Research Use Only

# PSME1 Monoclonal antibody, PBS Only

Catalog Number: 67928-1-PBS

Featured Product



## Basic Information

**Catalog Number:**

67928-1-PBS

**Size:**

100ug, Concentration: 1 mg/ml by Nanodrop;

**Source:**

Mouse

**Isotype:**

IgG1

**Immunogen Catalog Number:**

AG30549

**GenBank Accession Number:**

BC007503

**GeneID (NCBI):**

5720

**UNIPROT ID:**

Q06323

**Full Name:**

proteasome (prosome, macropain) activator subunit 1 (PA28 alpha)

**Calculated MW:**

29 kDa

**Observed MW:**

29 kDa

**Purification Method:**

Protein G purification

**CloneNo.:**

1F7E2

## Applications

**Tested Applications:**

WB, IF/ICC, Indirect ELISA

**Species Specificity:**

human, mouse, rat

## Background Information

The principal function of the proteasome is targeted degradation of intracellular proteins. Activity of the 20S proteasome is controlled by regulatory complexes that bind to the ends of the cylindrical proteasome. 11S regulator (REG or PA28), is a complex of 28 kDa subunits that is thought to activate proteasomes toward the production of antigenic peptides. Human PSME1 and PSME2 genes encode the two proteasome activators PA28 alpha and beta, respectively, which have been implicated in antigen processing for loading class I MHC molecules. The PA28 activator complex enhances the generation of class I binding peptides by altering the cleavage pattern of the proteasome.

## Storage

**Storage:**

Store at -80°C.

**Storage Buffer:**

PBS Only

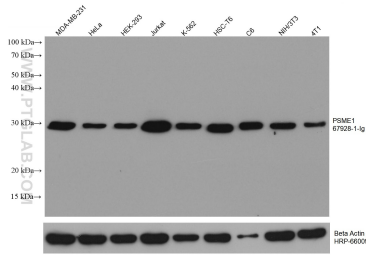
For technical support and original validation data for this product please contact:

T: 1 (888) 4PTGLAB (1-888-478-4522) (toll free in USA), or 1(312) 455-8498 (outside USA)

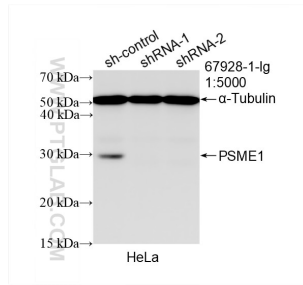
E: [proteintech@ptglab.com](mailto:proteintech@ptglab.com)  
W: [ptglab.com](http://ptglab.com)

**This product is exclusively available under Proteintech Group brand and is not available to purchase from any other manufacturer.**

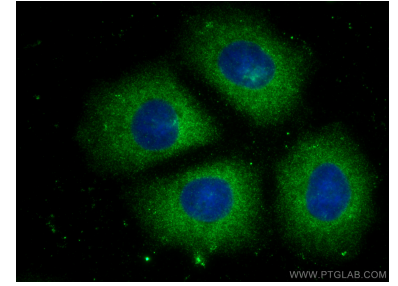
## Selected Validation Data



Various lysates were subjected to SDS PAGE followed by western blot with 67928-1-Ig (PSME1 antibody) at dilution of 1:10000 incubated at room temperature for 1.5 hours. The membrane was stripped and reblotted with HRP-conjugated Beta Actin Monoclonal antibody (HRP-66009) as loading control. This data was developed using the same antibody clone with 67928-1-PBS in a different storage buffer formulation.



WB result of PSME1 antibody (67928-1-Ig; 1:5000; incubated at room temperature for 1.5 hours) with sh-Control and sh-PSME1 transfected HeLa cells. This data was developed using the same antibody clone with 67928-1-PBS in a different storage buffer formulation.



Immunofluorescent analysis of (-20°C Methanol) fixed MCF-7 cells using PSME1 antibody (67928-1-Ig, Clone: 1F7E2 ) at dilution of 1:1000 and CoraLite@488-Conjugated AffiniPure Goat Anti-Mouse IgG(H+L). This data was developed using the same antibody clone with 67928-1-PBS in a different storage buffer formulation.