

For Research Use Only

# ROBO1 Monoclonal antibody

Catalog Number:67922-1-Ig



## Basic Information

<b>Catalog Number:</b> 67922-1-Ig	<b>GenBank Accession Number:</b> BC112336	<b>Purification Method:</b> Protein G purification
<b>Size:</b> 150ul , Concentration: 1000 ug/ml by Nanodrop;	<b>GeneID (NCBI):</b> 6091	<b>CloneNo.:</b> 2H4H5
<b>Source:</b> Mouse	<b>UNIPROT ID:</b> Q9Y6N7	<b>Recommended Dilutions:</b> WB 1:5000-1:50000 IHC 1:2500-1:10000
<b>Isotype:</b> IgG1	<b>Full Name:</b> roundabout, axon guidance receptor, homolog 1 (Drosophila)	
<b>Immunogen Catalog Number:</b> AG18074	<b>Calculated MW:</b> 1651 aa, 181 kDa	
	<b>Observed MW:</b> 200 kDa	

## Applications

### Tested Applications:

WB, IHC, ELISA

### Species Specificity:

Human, Mouse

**Note-IHC: suggested antigen retrieval with TE buffer pH 9.0; (\*) Alternatively, antigen retrieval may be performed with citrate buffer pH 6.0**

### Positive Controls:

WB : Y79 cells, HEK-293 cells, HeLa cells, HepG2 cells, U-87 MG cells

IHC : mouse cerebellum tissue,

## Background Information

ROBO1, also named as DUTT1, belongs to the immunoglobulin superfamily and ROBO family. It is a receptor for SLIT1 and SLIT2 which are thought to act as molecular guidance cue in cellular migration, including axonal navigation at the ventral midline of the neural tube and projection of axons to different regions during neuronal development. In axon growth cones, the silencing of the attractive effect of NTN1 by SLIT2 may require the formation of a ROBO1-DCC complex. It may be required for lung development.

## Storage

### Storage:

Store at -20°C.

### Storage Buffer:

PBS with 0.02% sodium azide and 50% glycerol pH 7.3.

Aliquoting is unnecessary for -20°C storage

\*\*\* 20ul sizes contain 0.1% BSA

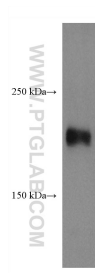
For technical support and original validation data for this product please contact:

T: 1 (888) 4PTGLAB (1-888-478-4522) (toll free in USA), or 1(312) 455-8498 (outside USA)

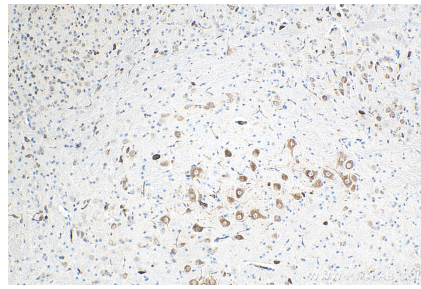
E: [proteintech@ptglab.com](mailto:proteintech@ptglab.com)  
W: [ptglab.com](http://ptglab.com)

This product is exclusively available under Proteintech Group brand and is not available to purchase from any other manufacturer.

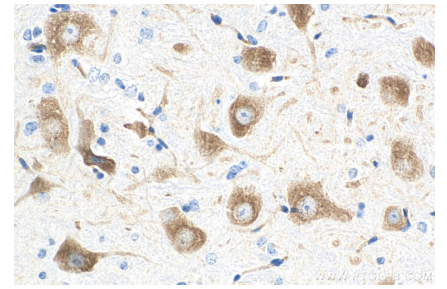
## Selected Validation Data



Y79 cells were subjected to SDS PAGE followed by western blot with 67922-1-Ig (ROBO1 antibody) at dilution of 1:10000 incubated at room temperature for 1.5 hours.



Immunohistochemical analysis of paraffin-embedded mouse cerebellum tissue slide using 67922-1-Ig (ROBO1 antibody) at dilution of 1:5000 (under 10x lens). Heat mediated antigen retrieval with Tris-EDTA buffer (pH 9.0).



Immunohistochemical analysis of paraffin-embedded mouse cerebellum tissue slide using 67922-1-Ig (ROBO1 antibody) at dilution of 1:5000 (under 40x lens). Heat mediated antigen retrieval with Tris-EDTA buffer (pH 9.0).