

For Research Use Only

YTHDC1 Monoclonal antibody, PBS Only



Catalog Number: 67911-1-PBS

Basic Information

Catalog Number: 67911-1-PBS	GenBank Accession Number: BC053863	Purification Method: Protein A purification
Size: 100ug, Concentration: 1 mg/ml by Nanodrop;	GeneID (NCBI): 91746	CloneNo.: 1F5G11
Source: Mouse	UNIPROT ID: Q96MU7	
Isotype: IgG1	Full Name: YTH domain containing 1	
Immunogen Catalog Number: AG6289	Calculated MW: 85 kDa	
	Observed MW: ~100 kDa	

Applications

Tested Applications:
WB, IHC, ELISA

Species Specificity:
Human, mouse

Background Information

YTHDC1, containing 1 YTH domain, is one of the m6A-binding proteins that can recognize and bind to the m6A methylation site and plays a specific role in gene expression. YTHDC1 is constitutively enriched in the nucleus. It regulates mRNA splicing by bridging the interactions between the trans- and cis-regulatory elements to bind targeted mRNAs. YTHDC1 mediates the export of m6A modified mRNA from the nucleus to the cytoplasm by interacting with SRSF3, which is an essential factor driving the tumorigenic process in various types of cancers including breast cancer, colon cancer, ovarian cancer, osteosarcoma, and glioblastoma (32368386).

Storage

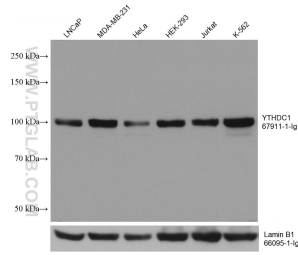
Storage:
Store at -80°C.

Storage Buffer:
PBS only

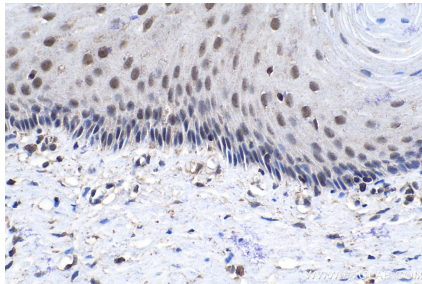
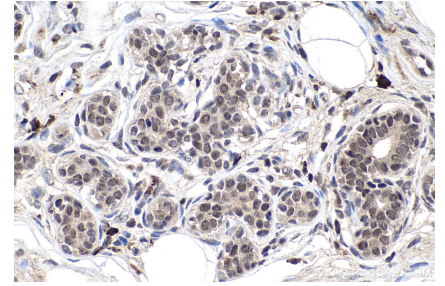
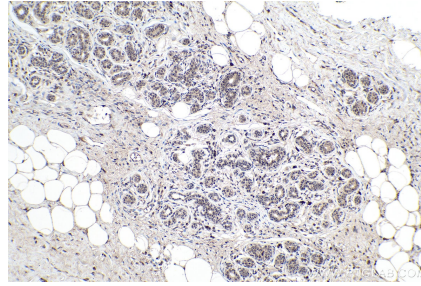
For technical support and original validation data for this product please contact:
T: 1 (888) 4PTGLAB (1-888-478-4522) (toll free in USA), or 1(312) 455-8498 (outside USA)
E: proteintech@ptglab.com
W: ptglab.com

This product is exclusively available under Proteintech Group brand and is not available to purchase from any other manufacturer.

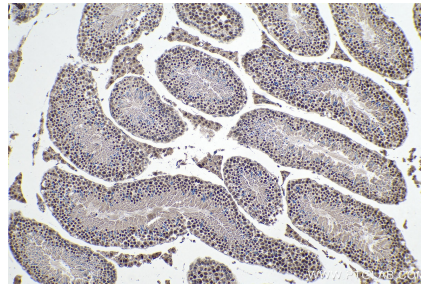
Selected Validation Data



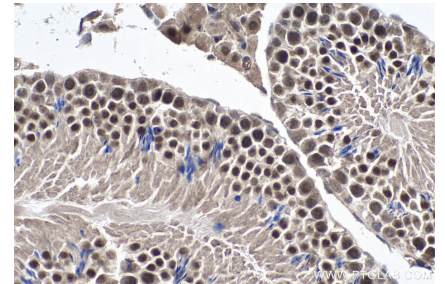
Various lysates were subjected to SDS PAGE followed by western blot with 67911-1-Ig (YTHDC1 antibody) at dilution of 1:5000 incubated at room temperature for 1.5 hours. The membrane was stripped and reblotted with Lamin B1 Monoclonal antibody (66095-1-Ig) as loading control. This data was developed using the same antibody clone with 67911-1-PBS in a different storage buffer formulation.



Immunohistochemical analysis of paraffin-embedded human cervical cancer tissue slide using 67911-1-Ig (YTHDC1 antibody) at dilution of 1:4000 (under 40x lens). Heat mediated antigen retrieval with Tris-EDTA buffer (pH 9.0). This data was developed using the same antibody clone with 67911-1-PBS in a different storage buffer formulation.



Immunohistochemical analysis of paraffin-embedded mouse testis tissue slide using 67911-1-Ig (YTHDC1 antibody) at dilution of 1:4000 (under 10x lens). Heat mediated antigen retrieval with Tris-EDTA buffer (pH 9.0). This data was developed using the same antibody clone with 67911-1-PBS in a different storage buffer formulation.



Immunohistochemical analysis of paraffin-embedded mouse testis tissue slide using 67911-1-Ig (YTHDC1 antibody) at dilution of 1:4000 (under 40x lens). Heat mediated antigen retrieval with Tris-EDTA buffer (pH 9.0). This data was developed using the same antibody clone with 67911-1-PBS in a different storage buffer formulation.