

For Research Use Only

# MRPS25 Monoclonal antibody, PBS Only



Catalog Number: 67903-1-PBS

Featured Product

## Basic Information

Catalog Number:

67903-1-PBS

Size:

100ug, Concentration: 1 mg/ml by Nanodrop;

Source:

Mouse

Isotype:

IgG2b

Immunogen Catalog Number:

AG7846

GenBank Accession Number:

BC003590

GeneID (NCBI):

64432

UNIPROT ID:

P82663

Full Name:

mitochondrial ribosomal protein S25

Calculated MW:

20 kDa

Observed MW:

20 kDa

Purification Method:

Protein A purification

CloneNo.:

3B10B6

## Applications

Tested Applications:

WB, Indirect ELISA

Species Specificity:

Human, mouse, rat

## Background Information

Mitochondrial ribosomal protein S25 (MRPS25) belongs to the ribosomal protein S25/L51 family. It is a component of the mitochondrial ribosome small subunit (28S). The variant segregated with the disease and substitutes a highly conserved proline residue with leucine (p.P72L) that, based on the high-resolution structure of the 28S ribosome, is predicted to compromise inter-protein contacts and destabilize the small subunit.

## Storage

Storage:

Store at -80°C.

Storage Buffer:

PBS Only

For technical support and original validation data for this product please contact:

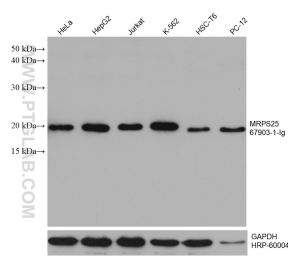
T: 1 (888) 4PTGLAB (1-888-478-4522) (toll free in USA), or 1(312) 455-8498 (outside USA)

E: [proteintech@ptglab.com](mailto:proteintech@ptglab.com)

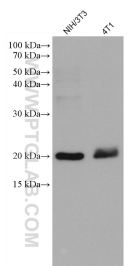
W: [ptglab.com](http://ptglab.com)

This product is exclusively available under Proteintech Group brand and is not available to purchase from any other manufacturer.

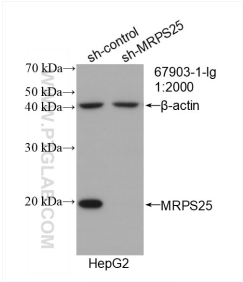
## Selected Validation Data



Various lysates were subjected to SDS PAGE followed by western blot with 67903-1-Ig (MRPS25 antibody) at dilution of 1:5000 incubated at room temperature for 1.5 hours. The membrane was stripped and reblotted with HRP-conjugated GAPDH Monoclonal antibody (HRP-60004) as loading control. This data was developed using the same antibody clone with 67903-1-PBS in a different storage buffer formulation.



Various lysates were subjected to SDS PAGE followed by western blot with 67903-1-Ig (MRPS25 antibody) at dilution of 1:5000 incubated at room temperature for 1.5 hours. This data was developed using the same antibody clone with 67903-1-PBS in a different storage buffer formulation.



WB result of MRPS25 antibody (67903-1-Ig; 1:2000; incubated at room temperature for 1.5 hours) with sh-Control and sh-MRPS25 transfected HepG2 cells. This data was developed using the same antibody clone with 67903-1-PBS in a different storage buffer formulation.