

For Research Use Only

# KBTBD2 Monoclonal antibody, PBS Only



Catalog Number: 67895-1-PBS

Featured Product

## Basic Information

Catalog Number:

67895-1-PBS

Size:

100ug, Concentration: 1 mg/ml by Nanodrop;

Source:

Mouse

Isotype:

IgG1

Immunogen Catalog Number:

AG4933

GenBank Accession Number:

BC047107

GeneID (NCBI):

25948

UNIPROT ID:

Q8IY47

Full Name:

kelch repeat and BTB (POZ) domain containing 2

Calculated MW:

622 aa, 71 kDa

Observed MW:

60-70 kDa

Purification Method:

Protein G purification

CloneNo.:

2A9F3

## Applications

Tested Applications:

WB, IF, Indirect ELISA

Species Specificity:

Human, mouse, rat

## Background Information

Kelch repeat and BTB domain containing 2 (KBTBD2), also known as BTB and kelch domain-containing protein 1, encodes a BTB-Kelch family subunit that p85 $\alpha$ -specific recognition for the Cullin3-based E3 ubiquitin ligase complex, which regulates p85 $\alpha$  protein ubiquitination and subsequently regulates phosphoinositide-3 kinases (PI3K) signaling (PMID:27708159). However, the expression profile and functional significance of Kbtbd2 is still largely unknown. The Human Protein Atlas which is an online source shows high Kbtbd2 expression in the spleen and thymus, suggesting that Kbtbd2 might involved in immunization (PMID:29331106). In addition, Kbtbd2 is related to Src-induced phosphorylation of protein, spermatogonial stem cell activity (PMID:15623525, 29331106).

## Storage

Storage:

Store at -80°C.

Storage Buffer:

PBS Only

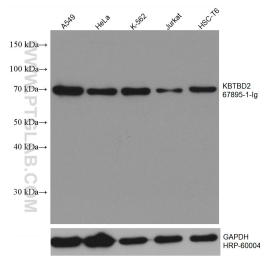
For technical support and original validation data for this product please contact:

T: 1 (888) 4PTGLAB (1-888-478-4522) (toll free in USA), or 1(312) 455-8498 (outside USA)

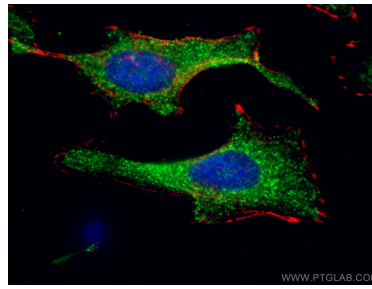
E: [proteintech@ptglab.com](mailto:proteintech@ptglab.com)  
W: [ptglab.com](http://ptglab.com)

This product is exclusively available under Proteintech Group brand and is not available to purchase from any other manufacturer.

## Selected Validation Data



Various lysates were subjected to SDS PAGE followed by western blot with 67895-1-Ig (KBTBD2 antibody) at dilution of 1:3000 incubated at room temperature for 1.5 hours. The membrane was stripped and reblotted with HRP-conjugated GAPDH Monoclonal antibody (HRP-60004) as loading control. This data was developed using the same antibody clone with 67895-1-PBS in a different storage buffer formulation.



Immunofluorescent analysis of (-20°C Ethanol) fixed HeLa cells using KBTBD2 antibody (67895-1-Ig, Clone: 2A9F3) at dilution of 1:400 and CoraLite®488-Conjugated AffiniPure Goat Anti-Mouse IgG(H+L), CL594-Phalloidin (red). DAPI (blue). This data was developed using the same antibody clone with 67895-1-PBS in a different storage buffer formulation.