

For Research Use Only

CYP24A1 Monoclonal antibody, PBS Only (Capture)

Catalog Number: 67887-2-PBS



Basic Information

Catalog Number: 67887-2-PBS	GenBank Accession Number: BC109083	Purification Method: Protein G Magarose purification
Size: 100ug , Concentration: 1 mg/ml by Nanodrop;	GeneID (NCBI): 1591	CloneNo.: 2C6E4
Source: Mouse	UNIPROT ID: Q07973	
Isotype: IgG1	Full Name: cytochrome P450, family 24, subfamily A, polypeptide 1	
Immunogen Catalog Number: AG17089	Calculated MW: 514 aa, 59 kDa	

Applications

Tested Applications:
Cytometric bead array, Indirect ELISA

Species Specificity:
human

Product Information

67887-2-PBS targets CYP24A1 as part of a matched antibody pair:

MP50481-1: 67887-2-PBS capture and 67887-3-PBS detection (validated in Cytometric bead array)

MP50481-2: 67887-2-PBS capture and 67887-4-PBS detection (validated in Cytometric bead array)

Unconjugated mouse monoclonal antibody pair in PBS only (BSA and azide free) storage buffer at a concentration of 1 mg/mL, ready for conjugation.

This conjugation ready format makes antibodies ideal for use in many applications including: ELISAs, multiplex assays requiring matched pairs, mass cytometry, and multiplex imaging applications. Antibody use should be optimized by the end user for each application and assay.

Storage

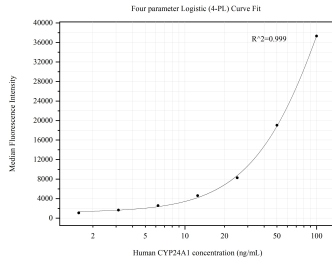
Storage:
Store at -80°C.

Storage Buffer:
PBS Only

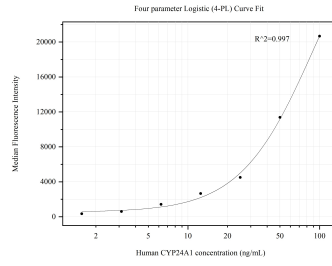
For technical support and original validation data for this product please contact:
T: 1 (888) 4PTGLAB (1-888-478-4522) (toll free in USA), or 1(312) 455-8498 (outside USA) E: proteintech@ptglab.com
W: ptglab.com

This product is exclusively available under Proteintech Group brand and is not available to purchase from any other manufacturer.

Selected Validation Data



Cytometric bead array standard curve of MP50481-1, CYP24A1 Monoclonal Matched Antibody Pair, PBS Only. Capture antibody: 67887-2-PBS. Detection antibody: 67887-3-PBS. Standard:Ag17089. Range: 1.563-100 ng/mL.



Cytometric bead array standard curve of MP50481-2, CYP24A1 Monoclonal Matched Antibody Pair, PBS Only. Capture antibody: 67887-2-PBS. Detection antibody: 67887-4-PBS. Standard:Ag17089. Range: 1.563-100 ng/mL.