

For Research Use Only

KDM1B Monoclonal antibody, PBS Only



Catalog Number: 67886-1-PBS

Basic Information

Catalog Number: 67886-1-PBS	GenBank Accession Number: NM_001364614	Purification Method: Protein A purification
Size: 100ug , Concentration: 1mg/ml by Nanodrop;	GeneID (NCBI): 221656	CloneNo.: 1E1A3
Source: Mouse	UNIPROT ID: Q8NB78	
Isotype: IgG2b	Full Name: amine oxidase (flavin containing) domain 1	
Immunogen Catalog Number: AG30672	Calculated MW: 92 kDa	
	Observed MW: 92 kDa	

Applications

Tested Applications:
Indirect ELISA, WB

Species Specificity:
rat, mouse, human

Storage

Storage:
Store at -80°C.

Storage Buffer:
PBS Only

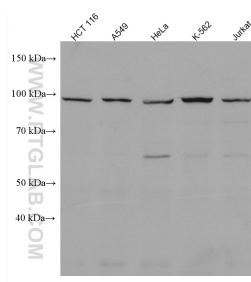
For technical support and original validation data for this product please contact:

T: 1 (888) 4PTGLAB (1-888-478-4522) (toll free in USA), or 1(312) 455-8498 (outside USA)

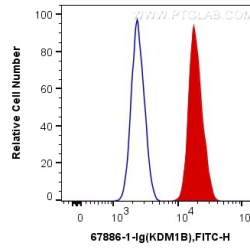
E: proteintech@ptglab.com
W: ptglab.com

This product is exclusively available under Proteintech Group brand and is not available to purchase from any other manufacturer.

Selected Validation Data



HCT 116 cells were subjected to SDS PAGE followed by western blot with 67886-1-Ig (KDM1B antibody) at dilution of 1:3000 incubated at room temperature for 1.5 hours. This data was developed using the same antibody clone with 67886-1-PBS in a different storage buffer formulation.



1×10^6 SW 1990 cells were intracellularly stained with 0.4 ug Anti-HUMAN KDM1B (67886-1-Ig, Clone:1E1A3) and CoraLite®488-Conjugated AffiniPure Goat Anti-Mouse IgG(H+L) at dilution 1:1000 (red), or 0.4 ug Control Antibody. Cells were fixed and permeabilized with Transcription Factor Staining Buffer Kit (PF00011). This data was developed using the same antibody clone with 67886-1-PBS in a different storage buffer formulation.