

For Research Use Only

# Cyclophilin A Monoclonal antibody, PBS Only



Catalog Number: 67880-1-PBS

## Basic Information

<b>Catalog Number:</b> 67880-1-PBS	<b>GenBank Accession Number:</b> BC005320	<b>Purification Method:</b> Protein A purification
<b>Size:</b> 100ug , Concentration: 1mg/ml by Nanodrop;	<b>GeneID (NCBI):</b> 5478	<b>CloneNo.:</b> 2B11B9
<b>Source:</b> Mouse	<b>UNIPROT ID:</b> P62937	
<b>Isotype:</b> IgG1	<b>Full Name:</b> peptidylprolyl isomerase A (cyclophilin A)	
<b>Immunogen Catalog Number:</b> AG1120	<b>Calculated MW:</b> 18 kDa	
	<b>Observed MW:</b> 18 kDa	

## Applications

**Tested Applications:**  
ELISA, IF/ICC, WB

**Species Specificity:**  
rat, mouse, human

## Background Information

Cyclophilin A, also named as PPIA and Rotamase A, belongs to the cyclophilin-type PPIase family and PPIase A subfamily. PPIases accelerate the folding of proteins. It catalyzes the cis-trans isomerization of proline imidic peptide bonds in oligopeptides. PPIA forms a trimolecular complex with cyclophilin and calcineurins to inhibit calcineurin phosphatase activity. PPIA is incorporated into the virion of the type 1 human immunodeficiency virus (HIV-1) via a direct interaction with the capsid domain of the viral Gag polyprotein and is crucial for efficient viral replication.

## Storage

**Storage:**  
Store at -80°C.

**Storage Buffer:**  
PBS Only

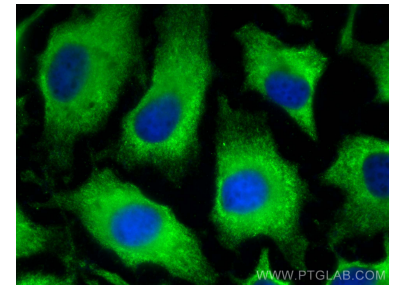
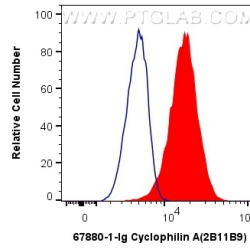
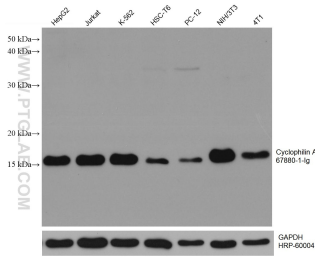
For technical support and original validation data for this product please contact:

T: 1 (888) 4PTGLAB (1-888-478-4522) (toll free  
in USA), or 1(312) 455-8498 (outside USA)

E: [proteintech@ptglab.com](mailto:proteintech@ptglab.com)  
W: [ptglab.com](http://ptglab.com)

**This product is exclusively available under Proteintech Group brand and is not available to purchase from any other manufacturer.**

## Selected Validation Data



Various lysates were subjected to SDS PAGE followed by western blot with 67880-1-Ig (CYPA antibody) at dilution of 1:20000 incubated at room temperature for 1.5 hours. The membrane was stripped and reblotted with HRP-conjugated GAPDH Monoclonal antibody (HRP-60004) as loading control. This data was developed using the same antibody clone with 67880-1-PBS in a different storage buffer formulation.

1X10<sup>6</sup> HeLa cells were intracellularly stained with 0.4 ug Anti-Human Cyclophilin A (67880-1-Ig, Clone:2B11B9) and CoraLite®488-Conjugated AffiniPure Goat Anti-Mouse IgG(H+L) at dilution 1:1000 (red), or 0.4 ug Mouse IgG1 Isotype Control (MOPC-21) (65124-1-Ig, Clone: MOPC-21) (blue). Cells were fixed with 4% PFA and permeabilized with Flow Cytometry Perm Buffer (PF00011-C). This data was developed using the same antibody clone with 67880-1-PBS in a

Immunofluorescent analysis of (-20°C Methanol) fixed HeLa cells using Cyclophilin A antibody (67880-1-Ig, Clone: 2B11B9) at dilution of 1:400 and CoraLite®488-Conjugated AffiniPure Goat Anti-Mouse IgG(H+L). This data was developed using the same antibody clone with 67880-1-PBS in a different storage buffer formulation.