

For Research Use Only

# MEK1 Monoclonal antibody, PBS Only (Capture)

Catalog Number: 67872-1-PBS

Featured Product



## Basic Information

**Catalog Number:**

67872-1-PBS

**Size:**

100ug, Concentration: 1mg/ml by Nanodrop;

**Source:**

Mouse

**Isotype:**

IgG1

**GenBank Accession Number:**

BC139729

**GeneID (NCBI):**

5604

**ENSEMBL Gene ID:**

ENSG00000169032

**UNIPROT ID:**

Q02750

**Full Name:**

mitogen-activated protein kinase kinase 1

**Calculated MW:**

43 kDa

**Observed MW:**

40-50 kDa

**Purification Method:**

Protein G purification

**CloneNo.:**

3F6D7

## Applications

**Tested Applications:**

WB, Cytometric bead array, Indirect ELISA

**Species Specificity:**

human, mouse, rat

## Product Information

67872-1-PBS targets MEK1 as part of a matched antibody pair:

MP50180-1: 67872-1-PBS capture and 68015-1-PBS detection (validated in Cytometric bead array)

Unconjugated mouse monoclonal antibody pair in PBS only (BSA and azide free) storage buffer at a concentration of 1 mg/mL, ready for conjugation.

This conjugation ready format makes antibodies ideal for use in many applications including: ELISAs, multiplex assays requiring matched pairs, mass cytometry, and multiplex imaging applications. Antibody use should be optimized by the end user for each application and assay.

## Background Information

MEK1 is also named as MAP2K1 (mitogen-activated protein kinase kinase 1), MAPKK1, PRKMK1, MKK1 and belongs to the MAP kinase kinase subfamily. It is a dual-specificity kinase that mediate ERK1 and ERK2 activation during adhesion and growth factor signaling (PMID:19219045). It also plays an essential role in extra-embryonic ectoderm during placentogenesis.

## Storage

**Storage:**

Store at -80°C.

**Storage Buffer:**

PBS Only

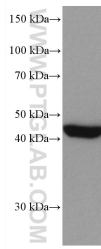
For technical support and original validation data for this product please contact:

T: 1 (888) 4PTGLAB (1-888-478-4522) (toll free in USA), or 1(312) 455-8498 (outside USA)

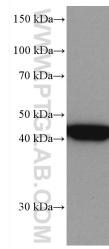
E: [proteintech@ptglab.com](mailto:proteintech@ptglab.com)  
W: [ptglab.com](http://ptglab.com)

**This product is exclusively available under Proteintech Group brand and is not available to purchase from any other manufacturer.**

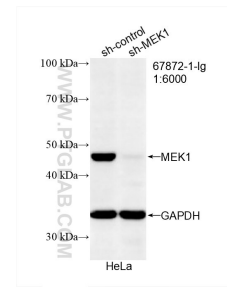
## Selected Validation Data



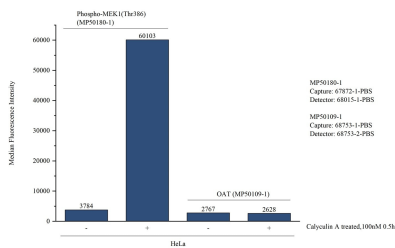
A431 cells were subjected to SDS PAGE followed by western blot with 67872-1-Ig (MEK1 antibody) at dilution of 1:5000 incubated at room temperature for 1.5 hours. This data was developed using the same antibody clone with 67872-1-PBS in a different storage buffer formulation.



Calyculin A treated HeLa cells were subjected to SDS PAGE followed by western blot with 67872-1-Ig (Phospho-MEK1 (Thr292) antibody) at dilution of 1:5000 incubated at room temperature for 1.5 hours. This data was developed using the same antibody clone with 67872-1-PBS in a different storage buffer formulation.



WB result of MEK1 antibody (67872-1-Ig; 1:6000; incubated at room temperature for 1.5 hours) with sh-Control and sh-MEK1 transfected HeLa cells. This data was developed using the same antibody clone with 67872-1-PBS in a different storage buffer formulation.



Cytometric bead array in cell lysate using MP50180-1, Phospho-MEK1 (Thr386) Monoclonal Matched Antibody Pair, PBS Only. Capture antibody: 67872-1-PBS. Detection antibody: 68015-1-PBS. Cell lysate: Non-treated HeLa and Calyculin A treated HeLa (30µg/well). Non-related target OAT Monoclonal Matched Antibody Pair (MP50109-1P) was served as control.