

For Research Use Only

HSP47/SERPINH1 Monoclonal antibody, PBS Only (Detector)

Catalog Number: 67863-1-PBS



Basic Information

Catalog Number: 67863-1-PBS	GenBank Accession Number: BC014623	Purification Method: Protein A purification
Size: 100ug, Concentration: 1mg/ml by Nanodrop;	GeneID (NCBI): 871	CloneNo.: 2A8F6
Source: Mouse	UNIPROT ID: P50454	
Isotype: IgG1	Full Name: serpin peptidase inhibitor, clade H (heat shock protein 47), member 1, (collagen binding protein 1)	
Immunogen Catalog Number: AG30999	Calculated MW: 46 kDa	
	Observed MW: 46 kDa	

Applications

Tested Applications:
WB, IHC, IF/ICC, Cytometric bead array, Indirect ELISA

Species Specificity:
human, mouse, rat

Product Information

67863-1-PBS targets HSP47/SERPINH1 as part of a matched antibody pair.

MP50781-1: 67863-2-PBS capture and 67863-1-PBS detection (validated in Cytometric bead array)

Unconjugated mouse monoclonal antibody pair in PBS only (BSA and azide free) storage buffer at a concentration of 1 mg/mL, ready for conjugation.

This conjugation ready format makes antibodies ideal for use in many applications including: ELISAs, multiplex assays requiring matched pairs, mass cytometry, and multiplex imaging applications. Antibody use should be optimized by the end user for each application and assay.

Storage

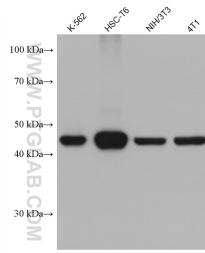
Storage:
Store at -80°C.

Storage Buffer:
PBS Only

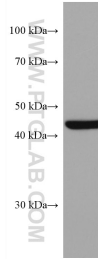
For technical support and original validation data for this product please contact:
T: 1 (888) 4PTGLAB (1-888-478-4522) (toll free in USA), or 1(312) 455-8498 (outside USA) E: proteintech@ptglab.com
W: ptglab.com

This product is exclusively available under Proteintech Group brand and is not available to purchase from any other manufacturer.

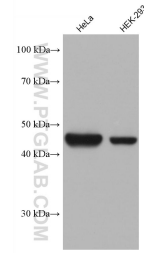
Selected Validation Data



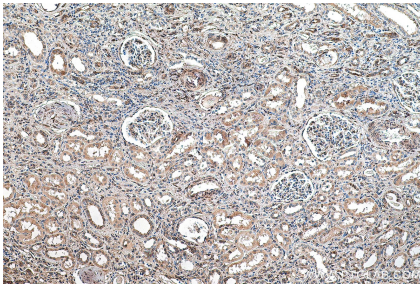
Various lysates were subjected to SDS PAGE followed by western blot with 67863-1-Ig (HSP47 antibody) at dilution of 1:20000 incubated at room temperature for 1.5 hours. This data was developed using the same antibody clone with 67863-1-PBS in a different storage buffer formulation.



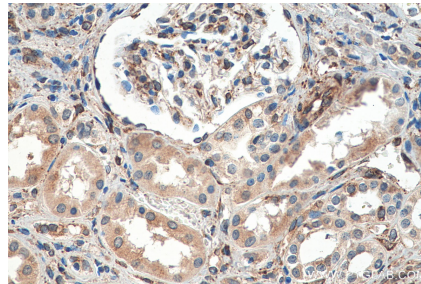
NIH/3T3 cells were subjected to SDS PAGE followed by western blot with 67863-1-Ig (SERPINH1 antibody) at dilution of 1:20000 incubated at room temperature for 1.5 hours. This data was developed using the same antibody clone with 67863-1-PBS in a different storage buffer formulation.



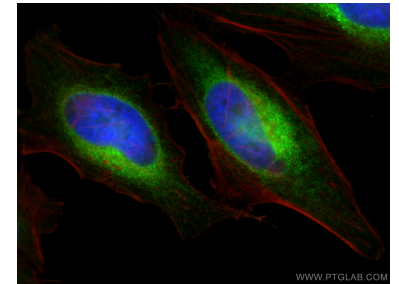
Various lysates were subjected to SDS PAGE followed by western blot with 67863-1-Ig (HSP47 antibody) at dilution of 1:20000 incubated at room temperature for 1.5 hours. This data was developed using the same antibody clone with 67863-1-PBS in a different storage buffer formulation.



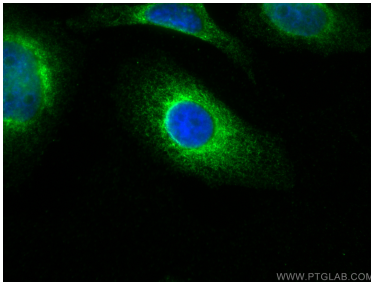
Immunohistochemical analysis of paraffin-embedded human renal cell carcinoma tissue slide using 67863-1-Ig (HSP47 antibody) at dilution of 1:2000 (under 10x lens). Heat mediated antigen retrieval with Tris-EDTA buffer (pH 9.0). This data was developed using the same antibody clone with 67863-1-PBS in a different storage buffer formulation.



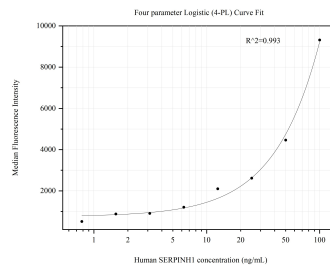
Immunohistochemical analysis of paraffin-embedded human renal cell carcinoma tissue slide using 67863-1-Ig (HSP47 antibody) at dilution of 1:2000 (under 40x lens). Heat mediated antigen retrieval with Tris-EDTA buffer (pH 9.0). This data was developed using the same antibody clone with 67863-1-PBS in a different storage buffer formulation.



Immunofluorescent analysis of (4% PFA) fixed HeLa cells using HSP47 antibody (67863-1-Ig, Clone: 2A8F6) at dilution of 1:800 and CoraLite®488-Conjugated AffiniPure Goat Anti-Mouse IgG(H+L), CL594-Phalloidin (red). This data was developed using the same antibody clone with 67863-1-PBS in a different storage buffer formulation.



Immunofluorescent analysis of (-20°C Ethanol) fixed HepG2 cells using HSP47 antibody (67863-1-Ig, Clone: 2A8F6) at dilution of 1:800 and CoraLite®488-Conjugated AffiniPure Goat Anti-Mouse IgG(H+L). This data was developed using the same antibody clone with 67863-1-PBS in a different storage buffer formulation.



Cytometric bead array standard curve of MP50781-1, HSP47/SERPINH1 Monoclonal Matched Antibody Pair, PBS Only. Capture antibody: 67863-2-PBS. Detection antibody: 67863-1-PBS. Standard: Ag30999. Range: 0.781-100 ng/mL.