

For Research Use Only

# GIT2 Monoclonal antibody, PBS Only

Catalog Number: 67858-1-PBS



## Basic Information

<b>Catalog Number:</b> 67858-1-PBS	<b>GenBank Accession Number:</b> BC001379	<b>Purification Method:</b> Protein G purification
<b>Size:</b> 100ug, Concentration: 1 mg/ml by Nanodrop;	<b>GeneID (NCBI):</b> 9815	<b>CloneNo.:</b> 2D9C5
<b>Source:</b> Mouse	<b>UNIPROT ID:</b> Q14161	
<b>Isotype:</b> IgG1	<b>Full Name:</b> G protein-coupled receptor kinase interacting ArfGAP 2	
<b>Immunogen Catalog Number:</b> AG0321	<b>Calculated MW:</b> 95 kDa	
	<b>Observed MW:</b> 70-85 kDa	

## Applications

**Tested Applications:**  
WB, IHC, Indirect ELISA

**Species Specificity:**  
Human, rat

## Storage

**Storage:**  
Store at -80°C.

**Storage Buffer:**  
PBS Only

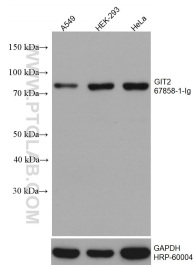
For technical support and original validation data for this product please contact:

T: 1 (888) 4PTGLAB (1-888-478-4522) (toll free in USA), or 1(312) 455-8498 (outside USA)

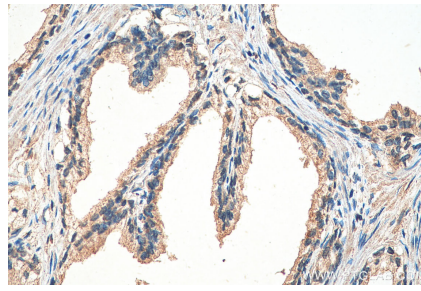
E: [proteintech@ptglab.com](mailto:proteintech@ptglab.com)  
W: [ptglab.com](http://ptglab.com)

This product is exclusively available under Proteintech Group brand and is not available to purchase from any other manufacturer.

## Selected Validation Data



Various lysates were subjected to SDS PAGE followed by western blot with 67858-1-Ig (GIT2 antibody) at dilution of 1:10000 incubated at room temperature for 1.5 hours. The membrane was stripped and reblotted with HRP-conjugated GAPDH Monoclonal antibody (HRP-60004) as loading control. This data was developed using the same antibody clone with 67858-1-PBS in a different storage buffer formulation.



Immunohistochemical analysis of paraffin-embedded human prostate cancer tissue slide using 67858-1-Ig (GIT2 antibody) at dilution of 1:1000 (under 40x lens). Heat mediated antigen retrieval with Tris-EDTA buffer (pH 9.0). This data was developed using the same antibody clone with 67858-1-PBS in a different storage buffer formulation.