

For Research Use Only

RCHY1 Monoclonal antibody, PBS Only



Catalog Number: 67856-1-PBS

Featured Product

Basic Information

Catalog Number:

67856-1-PBS

Size:

100ug, Concentration: 1 mg/ml by Nanodrop;

Source:

Mouse

Isotype:

IgG2a

Immunogen Catalog Number:

AG4942

GenBank Accession Number:

BC047393

GeneID (NCBI):

25898

UNIPROT ID:

Q96PM5

Full Name:

ring finger and CHY zinc finger domain containing 1

Calculated MW:

261 aa, 30 kDa

Purification Method:

Protein A purification

CloneNo.:

2C11C11

Applications

Tested Applications:

WB, IF, IHC, Indirect ELISA

Species Specificity:

Human

Background Information

Pirh2 is also named as RCHY1, ARNIP, CHIMP, PIRH2, RNF199, ZNF363 and has p53-induced ubiquitin-protein ligase activity, promoting p53 degradation. Pirh2 monoubiquitinates the translesion DNA polymerase POLH and contributes to the regulation of the cell cycle progression. This protein has 8 isoforms produced by alternative splicing and can exist as a monomer or homodimer.

Storage

Storage:

Store at -80°C.

Storage Buffer:

PBS Only

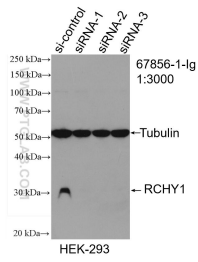
For technical support and original validation data for this product please contact:

T: 1 (888) 4PTGLAB (1-888-478-4522) (toll free in USA), or 1(312) 455-8498 (outside USA)

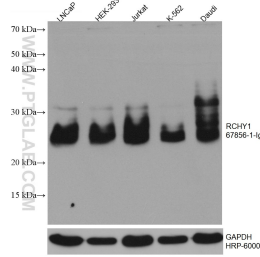
E: proteintech@ptglab.com
W: ptglab.com

This product is exclusively available under Proteintech Group brand and is not available to purchase from any other manufacturer.

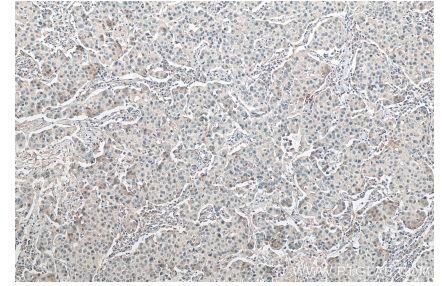
Selected Validation Data



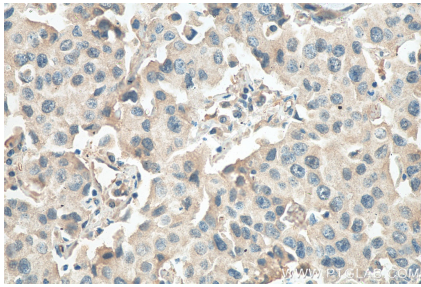
WB result of RCHY1 antibody (67856-1-Ig; 1:3000; incubated at room temperature for 1.5 hours) with sh-Control and sh-RCHY1 transfected HEK-293 cells. This data was developed using the same antibody clone with 67856-1-PBS in a different storage buffer formulation.



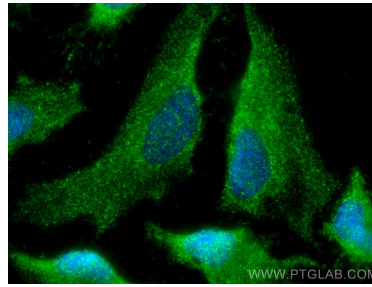
Various lysates were subjected to SDS PAGE followed by western blot with 67856-1-Ig (RCHY1 antibody) at dilution of 1:3000 incubated at room temperature for 1.5 hours. The membrane was stripped and reblotted with HRP-conjugated GAPDH Monoclonal antibody (HRP-60004) as loading control. This data was developed using the same antibody clone with 67856-1-PBS in a different storage buffer formulation.



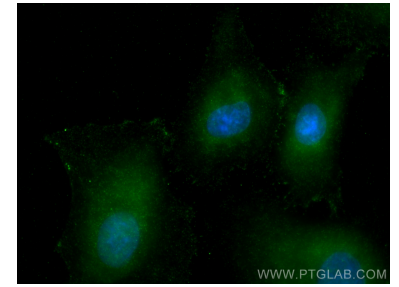
Immunohistochemical analysis of paraffin-embedded human breast cancer tissue slide using 67856-1-Ig (RCHY1 antibody) at dilution of 1:300 (under 10x lens). Heat mediated antigen retrieval with Tris-EDTA buffer (pH 9.0). This data was developed using the same antibody clone with 67856-1-PBS in a different storage buffer formulation.



Immunohistochemical analysis of paraffin-embedded human breast cancer tissue slide using 67856-1-Ig (RCHY1 antibody) at dilution of 1:300 (under 40x lens). Heat mediated antigen retrieval with Tris-EDTA buffer (pH 9.0). This data was developed using the same antibody clone with 67856-1-PBS in a different storage buffer formulation.



Immunofluorescent analysis of (-20°C Methanol) fixed HeLa cells using RCHY1 antibody (67856-1-Ig, Clone: 2C11C11) at dilution of 1:800 and Coralite@488-Conjugated AffiniPure Goat Anti-Mouse IgG(H+L). This data was developed using the same antibody clone with 67856-1-PBS in a different storage buffer formulation.



Immunofluorescent analysis of (-20°C Methanol) fixed A549 cells using RCHY1 antibody (67856-1-Ig, Clone: 2C11C11) at dilution of 1:800 and Coralite@488-Conjugated AffiniPure Goat Anti-Mouse IgG(H+L). This data was developed using the same antibody clone with 67856-1-PBS in a different storage buffer formulation.