

For Research Use Only

# RUVBL2 Monoclonal antibody, PBS Only



Catalog Number: 67851-1-PBS

## Basic Information

|                                                            |                                              |                                                       |
|------------------------------------------------------------|----------------------------------------------|-------------------------------------------------------|
| <b>Catalog Number:</b><br>67851-1-PBS                      | <b>GenBank Accession Number:</b><br>BC000428 | <b>Purification Method:</b><br>Protein A purification |
| <b>Size:</b><br>100ug, Concentration: 1 mg/ml by Nanodrop; | <b>GeneID (NCBI):</b><br>10856               | <b>CloneNo.:</b><br>1A1A4                             |
| <b>Source:</b><br>Mouse                                    | <b>UNIPROT ID:</b><br>Q9Y230                 |                                                       |
| <b>Isotype:</b><br>IgG2b                                   | <b>Full Name:</b><br>RuvB-like 2 (E. coli)   |                                                       |
| <b>Immunogen Catalog Number:</b><br>AG0253                 | <b>Calculated MW:</b><br>51 kDa              |                                                       |
|                                                            | <b>Observed MW:</b><br>51 kDa                |                                                       |

## Applications

**Tested Applications:**  
WB, IF, IHC, Indirect ELISA

**Species Specificity:**  
Human, mouse, rat

## Background Information

RUVBL2 belongs to the conserved ATPases associated with various cellular activities (AAA+) protein subfamily, which is characterized by the presence of conserved Walker A and B motifs that are involved in ATP binding and hydrolysis. The AAA+ (ATPases associated with diverse cellular activities) ATPases, RUVBL1 and RUVBL2, were originally isolated as components of transcriptional complexes and shown to function in a number of different cellular processes, including transcriptional regulation, chromatin remodelling and DNA damage responses. (PMID: 31572066, PMID: 31138842)

## Storage

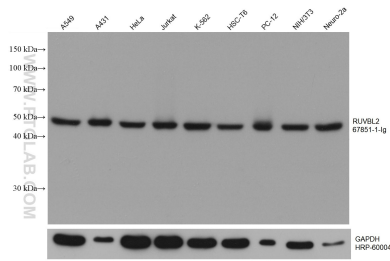
**Storage:**  
Store at -80°C.

**Storage Buffer:**  
PBS Only

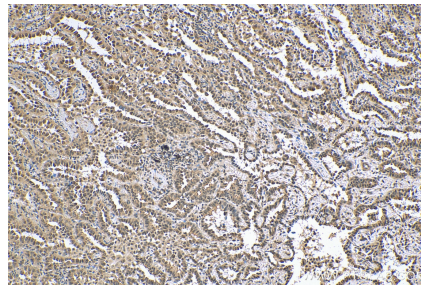
For technical support and original validation data for this product please contact:  
T: 1 (888) 4PTGLAB (1-888-478-4522) (toll free in USA), or 1(312) 455-8498 (outside USA)      E: proteintech@ptglab.com  
W: ptglab.com

This product is exclusively available under Proteintech Group brand and is not available to purchase from any other manufacturer.

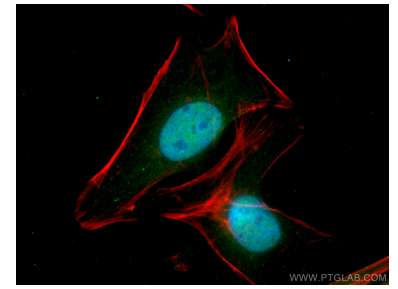
## Selected Validation Data



A549 cells were subjected to SDS PAGE followed by western blot with 67851-1-Ig (RUVBL2 antibody) at dilution of 1:10000 incubated at room temperature for 1.5 hours. The membrane was stripped and reblotted with HRP-conjugated GAPDH Monoclonal antibody (HRP-60004) as loading control. This data was developed using the same antibody clone with 67851-1-PBS in a different storage buffer formulation.



Immunohistochemical analysis of paraffin-embedded human lung cancer tissue slide using 67851-1-Ig (RUVBL2 antibody) at dilution of 1:1000 (under 10x lens). Heat mediated antigen retrieval with Tris-EDTA buffer (pH 9.0). This data was developed using the same antibody clone with 67851-1-PBS in a different storage buffer formulation.



Immunofluorescent analysis of (4% PFA) fixed HeLa cells using RUVBL2 antibody (67851-1-Ig, Clone: 1A1A4) at dilution of 1:400 and CoraLite®488-Conjugated AffiniPure Goat Anti-Mouse IgG(H+L), CL594-Phalloidin (red). This data was developed using the same antibody clone with 67851-1-PBS in a different storage buffer formulation.