

For Research Use Only

# VAPA Monoclonal antibody, PBS Only (Capture)

Catalog Number: 67845-2-PBS



## Basic Information

<b>Catalog Number:</b> 67845-2-PBS	<b>GenBank Accession Number:</b> BC002992	<b>Purification Method:</b> Protein G Magarose purification
<b>Size:</b> 100ug , Concentration: 1 mg/ml by Nanodrop;	<b>GeneID (NCBI):</b> 9218	<b>CloneNo.:</b> 1D2D8
<b>Source:</b> Mouse	<b>UNIPROT ID:</b> Q9P0LO	
<b>Isotype:</b> IgG1	<b>Full Name:</b> VAMP (vesicle-associated membrane protein)-associated protein A, 33kDa	
<b>Immunogen Catalog Number:</b> AG7819	<b>Calculated MW:</b> 28 kDa	

## Applications

**Tested Applications:**  
Cytometric bead array, Indirect ELISA

**Species Specificity:**  
human

## Product Information

67845-2-PBS targets VAPA as part of a matched antibody pair:

MP50773-1: 67845-2-PBS capture and 67845-3-PBS detection (validated in Cytometric bead array)

MP50773-2: 67845-2-PBS capture and 67845-4-PBS detection (validated in Cytometric bead array)

Unconjugated mouse monoclonal antibody pair in PBS only (BSA and azide free) storage buffer at a concentration of 1 mg/mL, ready for conjugation.

This conjugation ready format makes antibodies ideal for use in many applications including: ELISAs, multiplex assays requiring matched pairs, mass cytometry, and multiplex imaging applications. Antibody use should be optimized by the end user for each application and assay.

## Storage

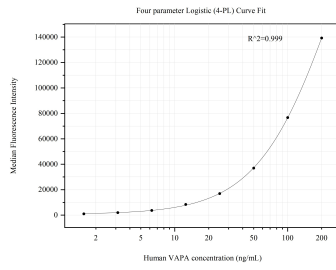
**Storage:**  
Store at -80°C.

**Storage Buffer:**  
PBS Only

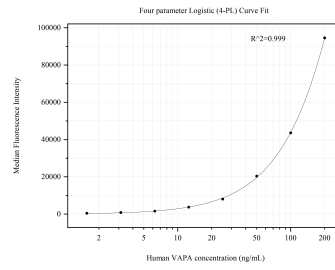
For technical support and original validation data for this product please contact:  
T: 1 (888) 4PTGLAB (1-888-478-4522) (toll free in USA), or 1(312) 455-8498 (outside USA)      E: proteintech@ptglab.com  
W: ptglab.com

**This product is exclusively available under Proteintech Group brand and is not available to purchase from any other manufacturer.**

## Selected Validation Data



Cytometric bead array standard curve of MP50773-1, VAPA Monoclonal Matched Antibody Pair, PBS Only. Capture antibody: 67845-2-PBS. Detection antibody: 67845-3-PBS. Standard:Ag7819. Range: 1.563-200 ng/mL



Cytometric bead array standard curve of MP50773-2, VAPA Monoclonal Matched Antibody Pair, PBS Only. Capture antibody: 67845-2-PBS. Detection antibody: 67845-4-PBS. Standard:Ag7819. Range: 1.563-200 ng/mL