

For Research Use Only

CIP2A Monoclonal antibody, PBS Only



Catalog Number: 67843-1-PBS

Basic Information

Catalog Number: 67843-1-PBS	GenBank Accession Number: BC130564	Purification Method: Protein G purification
Size: 100ug , Concentration: 1 mg/ml by Nanodrop;	GeneID (NCBI): 57650	CloneNo.: 2A3F3
Source: Mouse	UNIPROT ID: Q8TCG1	
Isotype: IgG1	Full Name: KIAA1524	
Immunogen Catalog Number: AG19598	Calculated MW: 905 aa, 102 kDa	
	Observed MW: 102 kDa	

Applications

Tested Applications:
WB, IF, Indirect ELISA

Species Specificity:
Human, rat

Background Information

Cancerous inhibitor of protein phosphatase 2A (CIP2A) was originally identified as a cellular protein phosphatase 2A (PP2A) inhibitor, and has been shown to control oncogenic cellular signals by suppressing the tumor suppressor PP2A. CIP2A overexpression has been found in several human malignancies including breast cancer, hepatocellular carcinoma, gastric cancer, head and neck cancer, colon cancer, prostate cancer and non-small cell lung cancer. CIP2A is a 83-102 kDa cytoplasmic protein. (PMID: 26824320, PMID: 25458953, PMID: 29720672)

Storage

Storage:
Store at -80°C.

Storage Buffer:
PBS Only

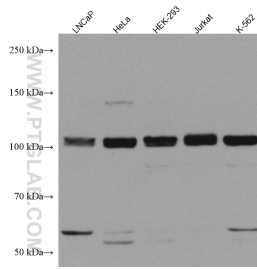
For technical support and original validation data for this product please contact:

T: 1 (888) 4PTGLAB (1-888-478-4522) (toll free in USA), or 1(312) 455-8498 (outside USA)

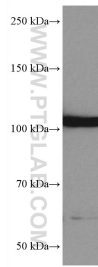
E: proteintech@ptglab.com
W: ptglab.com

This product is exclusively available under Proteintech Group brand and is not available to purchase from any other manufacturer.

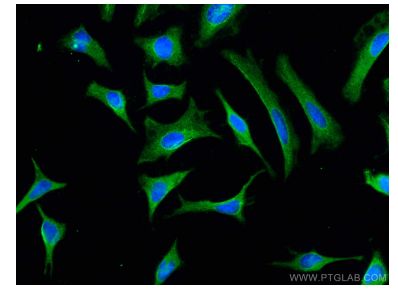
Selected Validation Data



Various lysates were subjected to SDS PAGE followed by western blot with 67843-1-Ig (KIAA1524 antibody) at dilution of 1:10000 incubated at room temperature for 1.5 hours. This data was developed using the same antibody clone with 67843-1-PBS in a different storage buffer formulation.



HSC-T6 cells were subjected to SDS PAGE followed by western blot with 67843-1-Ig (KIAA1524 antibody) at dilution of 1:10000 incubated at room temperature for 1.5 hours. This data was developed using the same antibody clone with 67843-1-PBS in a different storage buffer formulation.



Immunofluorescent analysis of (-20°C Methanol) fixed HeLa cells using KIAA1524 antibody (67843-1-Ig, Clone: 2A3F3) at dilution of 1:400 and CoraLite®488-Conjugated AffiniPure Goat Anti-Mouse IgG(H+L). This data was developed using the same antibody clone with 67843-1-PBS in a different storage buffer formulation.