

For Research Use Only

# TALDO1 Monoclonal antibody, PBS Only



Catalog Number: 67816-1-PBS

Featured Product

## Basic Information

<b>Catalog Number:</b> 67816-1-PBS	<b>GenBank Accession Number:</b> BC009680	<b>Purification Method:</b> Protein G purification
<b>Size:</b> 100ug, Concentration: 1 mg/ml by Nanodrop;	<b>GeneID (NCBI):</b> 6888	<b>CloneNo.:</b> 2F5G3
<b>Source:</b> Mouse	<b>UNIPROT ID:</b> P37837	
<b>Isotype:</b> IgG1	<b>Full Name:</b> transaldolase 1	
<b>Immunogen Catalog Number:</b> AG3031	<b>Calculated MW:</b> 337 aa, 38 kDa	
	<b>Observed MW:</b> 38 kDa	

## Applications

**Tested Applications:**  
WB, IHC, Indirect ELISA

**Species Specificity:**  
Human

## Background Information

TALDO1 belongs to the transaldolase family which contributes to the generation of NADPH in the nonoxidative phase of the pentose phosphate pathway (PPP). Defects in TALDO1 are the cause of transaldolase 1 deficiency which results in telangiectases of the skin, hepatosplenomegaly, and enlarged clitoris.

## Storage

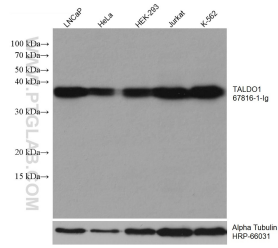
**Storage:**  
Store at -80°C.

**Storage Buffer:**  
PBS Only

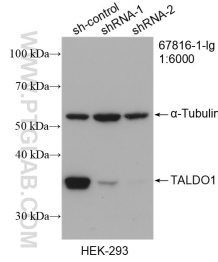
For technical support and original validation data for this product please contact:  
T: 1 (888) 4PTGLAB (1-888-478-4522) (toll free in USA), or 1(312) 455-8498 (outside USA)      E: [proteintech@ptglab.com](mailto:proteintech@ptglab.com)  
W: [ptglab.com](http://ptglab.com)

This product is exclusively available under Proteintech Group brand and is not available to purchase from any other manufacturer.

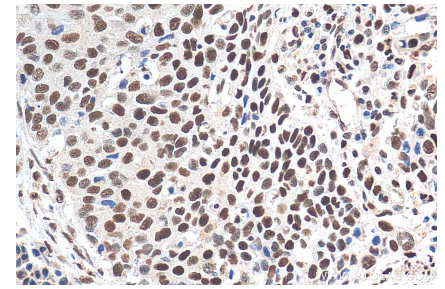
## Selected Validation Data



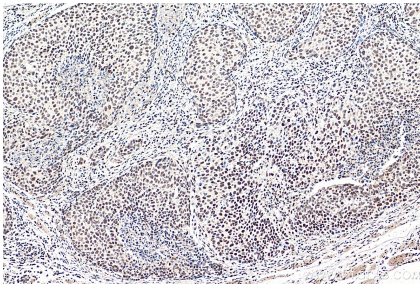
Various lysates were subjected to SDS PAGE followed by western blot with 67816-1-Ig (TALDO1 antibody) at dilution of 1:10000 incubated at room temperature for 1.5 hours. The membrane was stripped and reblotted with HRP-conjugated Alpha Tubulin Monoclonal antibody (HRP-66031) as loading control. This data was developed using the same antibody clone with 67816-1-PBS in a different storage buffer formulation.



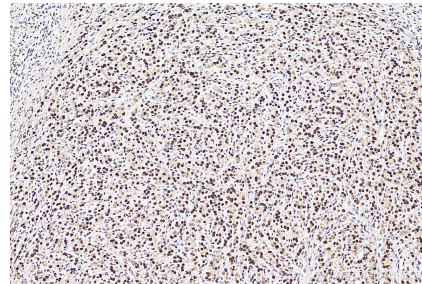
WB result of TALDO1 antibody (67816-1-Ig; 1:6000; incubated at room temperature for 1.5 hours) with sh-Control and sh-TALDO1 transfected HEK-293 cells. This data was developed using the same antibody clone with 67816-1-PBS in a different storage buffer formulation.



Immunohistochemical analysis of paraffin-embedded human oesophagus cancer tissue slide using 67816-1-Ig (TALDO1 antibody) at dilution of 1:1000 (under 40x lens). Heat mediated antigen retrieval with Tris-EDTA buffer (pH 9.0). This data was developed using the same antibody clone with 67816-1-PBS in a different storage buffer formulation.



Immunohistochemical analysis of paraffin-embedded human oesophagus cancer tissue slide using 67816-1-Ig (TALDO1 antibody) at dilution of 1:1000 (under 10x lens). Heat mediated antigen retrieval with Tris-EDTA buffer (pH 9.0). This data was developed using the same antibody clone with 67816-1-PBS in a different storage buffer formulation.



Immunohistochemical analysis of paraffin-embedded human prostate cancer tissue slide using 67816-1-Ig (TALDO1 antibody) at dilution of 1:1000 (under 10x lens). Heat mediated antigen retrieval with Tris-EDTA buffer (pH 9.0). This data was developed using the same antibody clone with 67816-1-PBS in a different storage buffer formulation.