

For Research Use Only

# LARP1 Monoclonal antibody, PBS Only



Catalog Number: 67810-1-PBS

## Basic Information

<b>Catalog Number:</b> 67810-1-PBS	<b>GenBank Accession Number:</b> BC033856	<b>Purification Method:</b> Protein A purification
<b>Size:</b> 100ug, Concentration: 1 mg/ml by Nanodrop;	<b>GeneID (NCBI):</b> 23367	<b>CloneNo.:</b> 2E9F2
<b>Source:</b> Mouse	<b>UNIPROT ID:</b> Q6PKG0	
<b>Isotype:</b> IgG1	<b>Full Name:</b> La ribonucleoprotein domain family, member 1	
<b>Immunogen Catalog Number:</b> AG29993	<b>Calculated MW:</b> 1096 aa, 124 kDa	
	<b>Observed MW:</b> 140-150 kDa	

## Applications

**Tested Applications:**  
WB, IF, IHC, ELISA

**Species Specificity:**  
Human, mouse, rat

## Storage

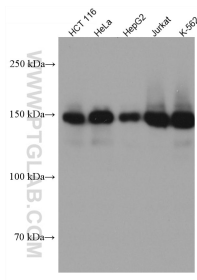
**Storage:**  
Store at -80°C.

**Storage Buffer:**  
PBS only

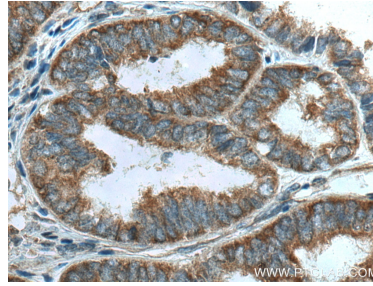
For technical support and original validation data for this product please contact:  
T: 1 (888) 4PTGLAB (1-888-478-4522) (toll free in USA), or 1(312) 455-8498 (outside USA)      E: [proteintech@ptglab.com](mailto:proteintech@ptglab.com)  
W: [ptglab.com](http://ptglab.com)

This product is exclusively available under Proteintech Group brand and is not available to purchase from any other manufacturer.

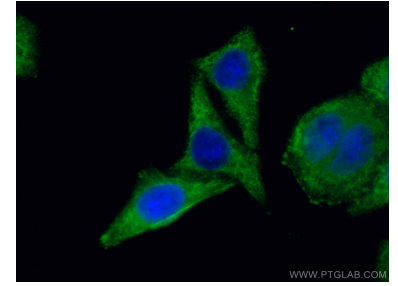
## Selected Validation Data



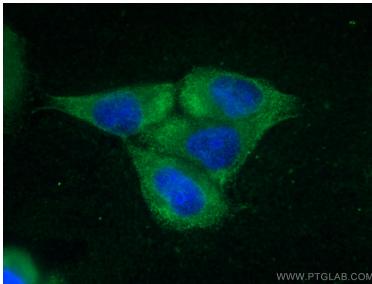
Various lysates were subjected to SDS PAGE followed by western blot with 67810-1-Ig (LARP1 antibody) at dilution of 1:5000 incubated at room temperature for 1.5 hours. This data was developed using the same antibody clone with 67810-1-PBS in a different storage buffer formulation.



Immunohistochemical analysis of paraffin-embedded human ovary tumor tissue slide using 67810-1-Ig (LARP1 antibody) at dilution of 1:1000 (under 40x lens). Heat mediated antigen retrieval with Tris-EDTA buffer (pH 9.0). This data was developed using the same antibody clone with 67810-1-PBS in a different storage buffer formulation.



Immunofluorescent analysis of (-20°C Ethanol) fixed HepG2 cells using LARP1 antibody (67810-1-Ig, Clone: 2E9F2) at dilution of 1:400 and CoraLite®488-Conjugated AffiniPure Goat Anti-Mouse IgG(H+L). Blue (DAPI). This data was developed using the same antibody clone with 67810-1-PBS in a different storage buffer formulation.



Immunofluorescent analysis of (-20°C Ethanol) fixed HepG2 cells using LARP1 antibody (67810-1-Ig, Clone: 2E9F2) at dilution of 1:800 and CoraLite®488-Conjugated AffiniPure Goat Anti-Mouse IgG(H+L). This data was developed using the same antibody clone with 67810-1-PBS in a different storage buffer formulation.