

For Research Use Only

# HK3 Monoclonal antibody, PBS Only

Catalog Number: 67803-1-PBS



## Basic Information

<b>Catalog Number:</b> 67803-1-PBS	<b>GenBank Accession Number:</b> BC028129	<b>Purification Method:</b> Protein A purification
<b>Size:</b> 100ug , Concentration: 1mg/ml by Nanodrop;	<b>GeneID (NCBI):</b> 3101	<b>CloneNo.:</b> 3H3C7
<b>Source:</b> Mouse	<b>UNIPROT ID:</b> P52790	
<b>Isotype:</b> IgG1	<b>Full Name:</b> hexokinase 3 (white cell)	
<b>Immunogen Catalog Number:</b> AG30798	<b>Calculated MW:</b> 923 aa, 99 kDa	
	<b>Observed MW:</b> 99 kDa	

## Applications

**Tested Applications:**  
WB, IHC, ELISA

**Species Specificity:**  
human, mouse, rat, pig

## Background Information

Hexokinases phosphorylate glucose to produce glucose-6-phosphate (G6P), the first step in most glucose metabolism pathways. Hexokinase 3 also known as HK3, similar to hexokinases 1 and 2, this allosteric enzyme is inhibited by its product glucose-6-phosphate.

## Storage

**Storage:**  
Store at -80°C.

**Storage Buffer:**  
PBS Only

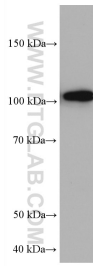
For technical support and original validation data for this product please contact:

T: 1 (888) 4PTGLAB (1-888-478-4522) (toll free in USA), or 1(312) 455-8498 (outside USA)

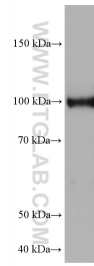
E: [proteintech@ptglab.com](mailto:proteintech@ptglab.com)  
W: [ptglab.com](http://ptglab.com)

**This product is exclusively available under Proteintech Group brand and is not available to purchase from any other manufacturer.**

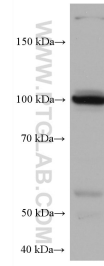
## Selected Validation Data



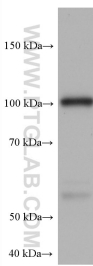
human saliva were subjected to SDS PAGE followed by western blot with 67803-1-Ig (HK3 antibody) at dilution of 1:10000 incubated at room temperature for 1.5 hours. This data was developed using the same antibody clone with 67803-1-PBS in a different storage buffer formulation.



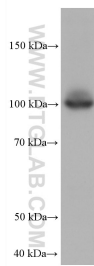
rat spleen tissue were subjected to SDS PAGE followed by western blot with 67803-1-Ig (HK3 antibody) at dilution of 1:10000 incubated at room temperature for 1.5 hours. This data was developed using the same antibody clone with 67803-1-PBS in a different storage buffer formulation.



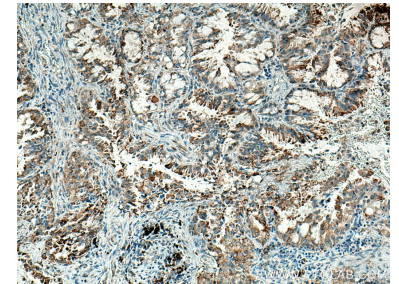
Raji cells were subjected to SDS PAGE followed by western blot with 67803-1-Ig (HK3 antibody) at dilution of 1:10000 incubated at room temperature for 1.5 hours. This data was developed using the same antibody clone with 67803-1-PBS in a different storage buffer formulation.



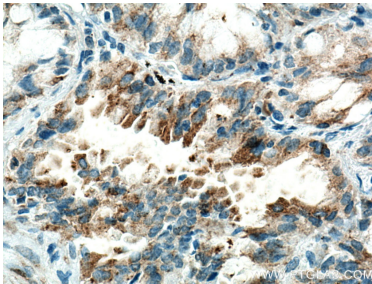
Ramos cells were subjected to SDS PAGE followed by western blot with 67803-1-Ig (HK3 antibody) at dilution of 1:10000 incubated at room temperature for 1.5 hours. This data was developed using the same antibody clone with 67803-1-PBS in a different storage buffer formulation.



RAW 264.7 cells were subjected to SDS PAGE followed by western blot with 67803-1-Ig (HK3 antibody) at dilution of 1:10000 incubated at room temperature for 1.5 hours. This data was developed using the same antibody clone with 67803-1-PBS in a different storage buffer formulation.



Immunohistochemical analysis of paraffin-embedded human lung cancer tissue slide using 67803-1-Ig (HK3 antibody) at dilution of 1:1000 (under 10x lens). Heat mediated antigen retrieval with Tris-EDTA buffer (pH 9.0). This data was developed using the same antibody clone with 67803-1-PBS in a different storage buffer formulation.



Immunohistochemical analysis of paraffin-embedded human lung cancer tissue slide using 67803-1-Ig (HK3 antibody) at dilution of 1:1000 (under 40x lens). Heat mediated antigen retrieval with Tris-EDTA buffer (pH 9.0). This data was developed using the same antibody clone with 67803-1-PBS in a different storage buffer formulation.