

For Research Use Only

# TWF1 Monoclonal antibody, PBS Only



Catalog Number: 67796-1-PBS

## Basic Information

**Catalog Number:**

67796-1-PBS

**Size:**

100ug, Concentration: 1 mg/ml by Nanodrop;

**Source:**

Mouse

**Isotype:**

IgG2a

**Immunogen Catalog Number:**

AG28630

**GenBank Accession Number:**

BC022344

**GeneID (NCBI):**

5756

**UNIPROT ID:**

Q12792

**Full Name:**

twinfilin, actin-binding protein, homolog 1 (Drosophila)

**Calculated MW:**

368 aa, 42 kDa

**Observed MW:**

36-38 kDa

**Purification Method:**

Protein A purification

**CloneNo.:**

2F10F11

## Applications

**Tested Applications:**

WB, IF, Indirect ELISA

**Species Specificity:**

Human

## Background Information

Twinfilin-1 (TWF1) is an actin-binding protein implicated in cell motility, invasion and migration. Its expression is linked to sensitivity to drugs and cancer progression. Overexpression of TWF1 has been reported in various cancers, including breast cancer and lung cancer.

## Storage

**Storage:**

Store at -80°C.

**Storage Buffer:**

PBS Only

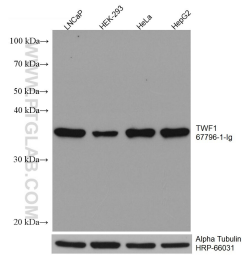
For technical support and original validation data for this product please contact:

T: 1 (888) 4PTGLAB (1-888-478-4522) (toll free in USA), or 1(312) 455-8498 (outside USA)

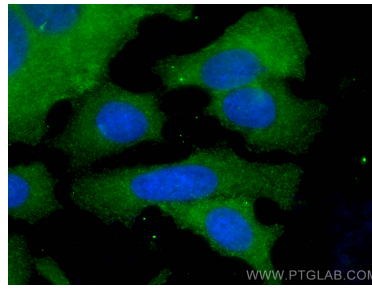
E: [proteintech@ptglab.com](mailto:proteintech@ptglab.com)  
W: [ptglab.com](http://ptglab.com)

This product is exclusively available under Proteintech Group brand and is not available to purchase from any other manufacturer.

## Selected Validation Data



Various lysates were subjected to SDS PAGE followed by western blot with 67796-1-Ig (TWF1 antibody) at dilution of 1:100000 incubated at room temperature for 1.5 hours. The membrane was stripped and reblotted with HRP-conjugated Alpha Tubulin Monoclonal antibody (HRP-66031) as loading control. This data was developed using the same antibody clone with 67796-1-PBS in a different storage buffer formulation.



Immunofluorescent analysis of (-20°C Methanol) fixed MCF-7 cells using TWF1 antibody (67796-1-Ig, Clone: 2F10F11) at dilution of 1:400 and CoraLite®488-Conjugated AffiniPure Goat Anti-Mouse IgG(H+L). This data was developed using the same antibody clone with 67796-1-PBS in a different storage buffer formulation.