

For Research Use Only

SERBP1 Monoclonal antibody, PBS Only



Catalog Number: 67792-1-PBS

Basic Information

| | | |
|---|--|---|
| Catalog Number: 67792-1-PBS | GenBank Accession Number: BC008045 | Purification Method: Protein G purification |
| Size: 100ug , Concentration: 1 mg/ml by Nanodrop; | GeneID (NCBI): 26135 | CloneNo.: 1D4H1 |
| Source: Mouse | UNIPROT ID: Q8NC51 | |
| Isotype: IgG1 | Full Name: SERPINE1 mRNA binding protein 1 | |
| Immunogen Catalog Number: AG30202 | Calculated MW: 45 kDa | |
| | Observed MW: 50 kDa | |

Applications

Tested Applications:
WB, IP, IF, IHC, Indirect ELISA

Species Specificity:
Human, Mouse, Rat, pig, Canine

Background Information

The plasminogen activator system (PA) plays an important role in invasion and metastasis of solid tumors. The PA Inhibitor type 1 (PAI-1) is the main physiologic regulator of plasminogen activation. PAI-RBP1 (PAI-1 mRNA Binding Protein 1, also named SERBP1), is an RNA-binding protein containing an RG-rich domain and an RGG box domain that might be methylated by protein arginine N-methyltransferases (PRMTs). SERBP1 was identified as an interacting partner of a Tudor domain containing protein TDRD3, and can localize to cytoplasmic stress granules (SGs).

Storage

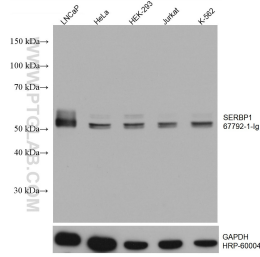
Storage:
Store at -80°C.

Storage Buffer:
PBS Only

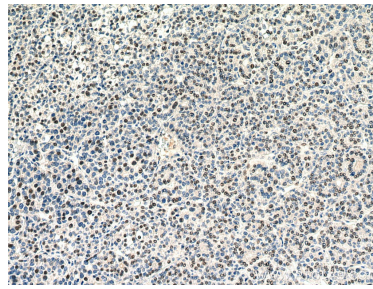
For technical support and original validation data for this product please contact:
T: 1 (888) 4PTGLAB (1-888-478-4522) (toll free in USA), or 1(312) 455-8498 (outside USA) E: proteintech@ptglab.com
W: ptglab.com

This product is exclusively available under Proteintech Group brand and is not available to purchase from any other manufacturer.

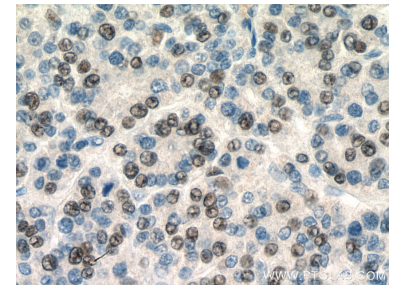
Selected Validation Data



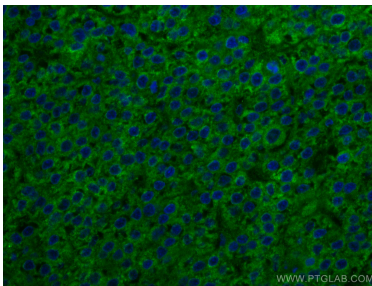
Various lysates were subjected to SDS PAGE followed by western blot with 67792-1-Ig (SERBP1 antibody) at dilution of 1:20000 incubated at room temperature for 1.5 hours. The membrane was stripped and reblotted with HRP-conjugated GAPDH Monoclonal antibody (HRP-60004) as loading control. This data was developed using the same antibody clone with 67792-1-PBS in a different storage buffer formulation.



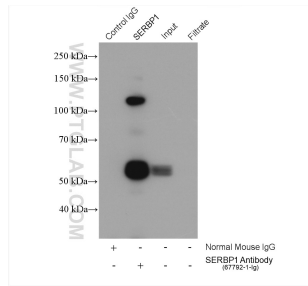
Immunohistochemical analysis of paraffin-embedded human liver cancer tissue slide using 67792-1-Ig (SERBP1 antibody) at dilution of 1:2000 (under 10x lens). Heat mediated antigen retrieval with Tris-EDTA buffer (pH 9.0). This data was developed using the same antibody clone with 67792-1-PBS in a different storage buffer formulation.



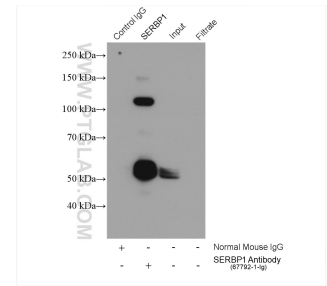
Immunohistochemical analysis of paraffin-embedded human liver cancer tissue slide using 67792-1-Ig (SERBP1 antibody) at dilution of 1:2000 (under 40x lens). Heat mediated antigen retrieval with Tris-EDTA buffer (pH 9.0). This data was developed using the same antibody clone with 67792-1-PBS in a different storage buffer formulation.



Immunofluorescent analysis of (4% PFA) fixed human liver cancer tissue using SERBP1 antibody (67792-1-Ig, Clone: 1D4H1) at dilution of 1:400 and CoraLite@488-Conjugated AffiniPure Goat Anti-Mouse IgG(H+L). DAPI (blue). This data was developed using the same antibody clone with 67792-1-PBS in a different storage buffer formulation.



IP result of anti-SERBP1 (IP:67792-1-Ig, 5ug; Detection:67792-1-Ig 1:2000) with HeLa cells lysate 1880 ug. This data was developed using the same antibody clone with 67792-1-PBS in a different storage buffer formulation.



IP result of anti-SERBP1 (IP:67792-1-Ig, 5ug; Detection:67792-1-Ig 1:2000) with HeLa cells lysate 1880 ug. This data was developed using the same antibody clone with 67792-1-PBS in a different storage buffer formulation.