

For Research Use Only

# CLIP-115/CLIP2 Monoclonal antibody, PBS Only



Catalog Number: 67776-1-PBS

Featured Product

## Basic Information

Catalog Number:

67776-1-PBS

Size:

100ug, Concentration: 1 mg/ml by Nanodrop;

Source:

Mouse

Isotype:

IgG1

Immunogen Catalog Number:

AG18902

GenBank Accession Number:

BC150332

GeneID (NCBI):

7461

UNIPROT ID:

Q9UDT6

Full Name:

CAP-GLY domain containing linker protein 2

Calculated MW:

1011 aa, 112 kDa

Observed MW:

120 kDa

Purification Method:

Protein G purification

CloneNo.:

2E6B6

## Applications

Tested Applications:

WB, IF, Indirect ELISA

Species Specificity:

Human, mouse, rat, pig, rabbit

## Background Information

CLIP-2/CLIP-115 is a cytoplasmic linker protein (CLIP) that links membranous organelles to microtubules. CLIP-115 is enriched in the axonal growth cone and it enables neuronal polarization by controlling the stabilization of microtubules. Mutation of CLIP-115 has been associated with Williams-Beuren syndrome.

## Storage

Storage:

Store at -80°C.

Storage Buffer:

PBS Only

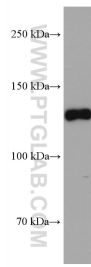
For technical support and original validation data for this product please contact:

T: 1 (888) 4PTGLAB (1-888-478-4522) (toll free in USA), or 1(312) 455-8498 (outside USA)

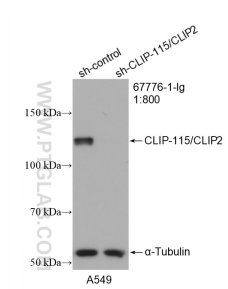
E: [proteintech@ptglab.com](mailto:proteintech@ptglab.com)  
W: [ptglab.com](http://ptglab.com)

This product is exclusively available under Proteintech Group brand and is not available to purchase from any other manufacturer.

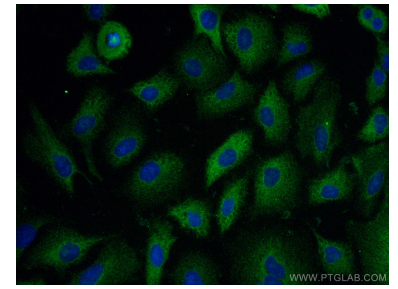
## Selected Validation Data



mouse cerebellum tissue were subjected to SDS PAGE followed by western blot with 67776-1-Ig (CLIP2 antibody) at dilution of 1:10000 incubated at room temperature for 1.5 hours. This data was developed using the same antibody clone with 67776-1-PBS in a different storage buffer formulation.



WB result of CLIP-115/CLIP2 antibody (67776-1-Ig; 1:800; incubated at room temperature for 1.5 hours) with sh-Control and sh-CLIP-115/CLIP2 transfected A549 cells. This data was developed using the same antibody clone with 67776-1-PBS in a different storage buffer formulation.



Immunofluorescent analysis of (-20°C Methanol) fixed A549 cells using CLIP-115/CLIP2 antibody (67776-1-Ig, Clone: 2E6B6) at dilution of 1:400 and CoraLite®488-Conjugated AffiniPure Goat Anti-Mouse IgG(H+L). This data was developed using the same antibody clone with 67776-1-PBS in a different storage buffer formulation.