

For Research Use Only

# KLHL25 Monoclonal antibody, PBS Only



Catalog Number: 67774-1-PBS

## Basic Information

<b>Catalog Number:</b> 67774-1-PBS	<b>GenBank Accession Number:</b> BC028100	<b>Purification Method:</b> Protein A purification
<b>Size:</b> 100ug , Concentration: 1 mg/ml by Nanodrop;	<b>GeneID (NCBI):</b> 64410	<b>CloneNo.:</b> 1D8B8
<b>Source:</b> Mouse	<b>UNIPROT ID:</b> Q9HOH3	
<b>Isotype:</b> IgG1	<b>Full Name:</b> kelch-like 25 (Drosophila)	
<b>Immunogen Catalog Number:</b> AG27037	<b>Observed MW:</b> 66 kDa	

## Applications

**Tested Applications:**  
WB, IHC, Indirect ELISA

**Species Specificity:**  
Human, Mouse

## Storage

**Storage:**  
Store at -80°C.  
**Storage Buffer:**  
PBS Only

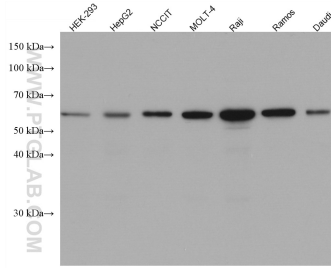
For technical support and original validation data for this product please contact:

T: 1 (888) 4PTGLAB (1-888-478-4522) (toll free in USA), or 1(312) 455-8498 (outside USA)

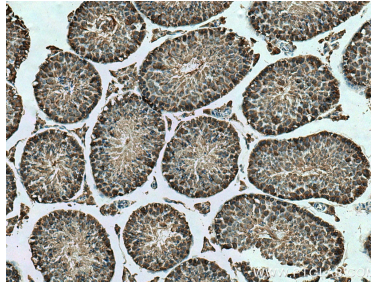
E: [proteintech@ptglab.com](mailto:proteintech@ptglab.com)  
W: [ptglab.com](http://ptglab.com)

This product is exclusively available under Proteintech Group brand and is not available to purchase from any other manufacturer.

## Selected Validation Data



Various lysates were subjected to SDS PAGE followed by western blot with 67774-1-Ig (KLHL25 antibody) at dilution of 1:3000 incubated at room temperature for 1.5 hours. This data was developed using the same antibody clone with 67774-1-PBS in a different storage buffer formulation.



Immunohistochemical analysis of paraffin-embedded mouse testis tissue slide using 67774-1-Ig (KLHL25 antibody) at dilution of 1:600 (under 10x lens). Heat mediated antigen retrieval with Tris-EDTA buffer (pH 9.0). This data was developed using the same antibody clone with 67774-1-PBS in a different storage buffer formulation.