

For Research Use Only

# REL Monoclonal antibody, PBS Only

Catalog Number: 67747-1-PBS



## Basic Information

<b>Catalog Number:</b> 67747-1-PBS	<b>GenBank Accession Number:</b> NM_001291746	<b>Purification Method:</b> Protein G purification
<b>Size:</b> 100ug , Concentration: 1 mg/ml by Nanodrop;	<b>GeneID (NCBI):</b> 5966	<b>CloneNo.:</b> 1F6A4
<b>Source:</b> Mouse	<b>UNIPROT ID:</b> Q04864	
<b>Isotype:</b> IgG1	<b>Full Name:</b> v-rel reticuloendotheliosis viral oncogene homolog (avian)	
<b>Immunogen Catalog Number:</b> AG26803	<b>Calculated MW:</b> 69 kDa	
	<b>Observed MW:</b> 68 kDa, 80 kDa	

## Applications

**Tested Applications:**  
WB, Indirect ELISA

**Species Specificity:**  
Human

## Background Information

REL, also known as, Proto-oncogene c-Rel, is a 619 amino acid protein, which may play a role in differentiation and lymphopoiesis. NF-kappa-B is a homo- or heterodimeric complex formed by the Rel-like domain-containing proteins RELA/p65, RELB, NFKB1/p105, NFKB1/p50, REL and NFKB2/p52. The NF-kappa-B heterodimer RELA/p65-c-Rel is a transcriptional activator. The full-length 80-kDa c-Rel was identified (PMID: 9857058).

## Storage

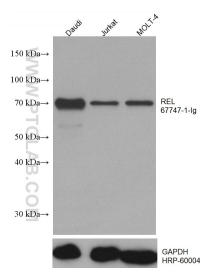
**Storage:**  
Store at -80°C.

**Storage Buffer:**  
PBS Only

For technical support and original validation data for this product please contact:  
T: 1 (888) 4PTGLAB (1-888-478-4522) (toll free in USA), or 1(312) 455-8498 (outside USA)  
E: [proteintech@ptglab.com](mailto:proteintech@ptglab.com)  
W: [ptglab.com](http://ptglab.com)

This product is exclusively available under Proteintech Group brand and is not available to purchase from any other manufacturer.

## Selected Validation Data



Various lysates were subjected to SDS PAGE followed by western blot with 67747-1-Ig (REL antibody) at dilution of 1:3000 incubated at room temperature for 1.5 hours. The membrane was stripped and reblotted with HRP-conjugated GAPDH Monoclonal antibody (HRP-60004) as loading control. This data was developed using the same antibody clone with 67747-1-PBS in a different storage buffer formulation.