

For Research Use Only

SKP1 Monoclonal antibody, PBS Only



Catalog Number: 67745-1-PBS

Basic Information

Catalog Number: 67745-1-PBS	GenBank Accession Number: BC009839	Purification Method: Protein A purification
Size: 100ug , Concentration: 1 mg/ml by Nanodrop;	GeneID (NCBI): 6500	CloneNo.: 1D5G4
Source: Mouse	UNIPROT ID: P63208	
Isotype: IgG2b	Full Name: S-phase kinase-associated protein 1	
Immunogen Catalog Number: AG30709	Calculated MW: 19 kDa	
	Observed MW: 18-20 kDa	

Applications

Tested Applications:
WB, IF, Indirect ELISA

Species Specificity:
Human, mouse, rat

Background Information

SKP1(S-phase kinase-associated protein 1) is also named as EMC19, OCP2, SKP1A, TCEB1L, belongs to the SKP1 family. It is an essential component of the SCF (SKP1-CUL1-F-box protein) ubiquitin ligase complex, which mediates the ubiquitination of proteins involved in cell cycle progression, signal transduction and transcription.

Storage

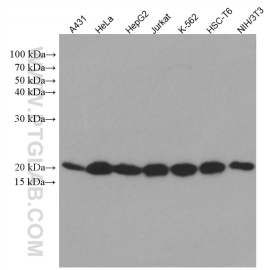
Storage:
Store at -80°C.

Storage Buffer:
PBS Only

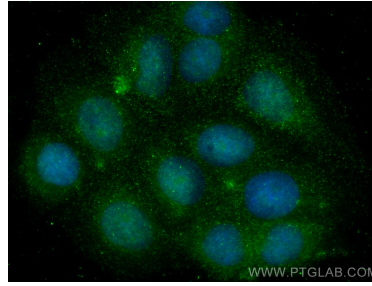
For technical support and original validation data for this product please contact:
T: 1 (888) 4PTGLAB (1-888-478-4522) (toll free in USA), or 1(312) 455-8498 (outside USA) E: proteintech@ptglab.com
W: ptglab.com

This product is exclusively available under Proteintech Group brand and is not available to purchase from any other manufacturer.

Selected Validation Data



Various lysates were subjected to SDS PAGE followed by western blot with 67745-1-Ig (SKP1 antibody) at dilution of 1:10000 incubated at room temperature for 1.5 hours. This data was developed using the same antibody clone with 67745-1-PBS in a different storage buffer formulation.



Immunofluorescent analysis of (4% PFA) fixed MCF-7 cells using SKP1 antibody (67745-1-Ig, Clone: 1D5G4) at dilution of 1:800 and CoraLite®488-Conjugated AffiniPure Goat Anti-Mouse IgG(H+L). This data was developed using the same antibody clone with 67745-1-PBS in a different storage buffer formulation.