

For Research Use Only

SIX1 Monoclonal antibody, PBS Only

Catalog Number: 67741-1-PBS



Basic Information

Catalog Number: 67741-1-PBS	GenBank Accession Number: BC008874	Purification Method: Protein A purification
Size: 100ug , Concentration: 1 mg/ml by Nanodrop;	GeneID (NCBI): 6495	CloneNo.: 2D7D1
Source: Mouse	UNIPROT ID: Q15475	
Isotype: IgG1	Full Name: SIX homeobox 1	
Immunogen Catalog Number: AG28570	Calculated MW: 32 kDa	
	Observed MW: 30-35 kDa	

Applications

Tested Applications:
WB, IF, ELISA

Species Specificity:
Human, mouse, pig, rabbit, rat

Background Information

SIX1 belongs to SIX family that contains a divergent DNA-binding homeodomain and an upstream SIX domain, which may participate both in determining DNA-binding specificity and in mediating protein-protein interactions. It may be involved in limb tendon and ligament development, and specifically expressed in skeletal muscle. SIX1 plays a essential role in the development of numerous organs and shows little to no expression in most non-neoplastic adult tissue, yet is overexpression in a number of meoplasms where it increases cell proliferation and survival. The calculated molecular weight of SIX1 is 32kDa, but modified SIX1 is about 35 kDa.

Storage

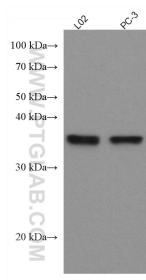
Storage:
Store at -80°C.

Storage Buffer:
PBS only

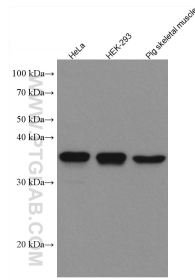
For technical support and original validation data for this product please contact:
T: 1 (888) 4PTGLAB (1-888-478-4522) (toll free in USA), or 1(312) 455-8498 (outside USA) E: proteintech@ptglab.com
W: ptglab.com

This product is exclusively available under Proteintech Group brand and is not available to purchase from any other manufacturer.

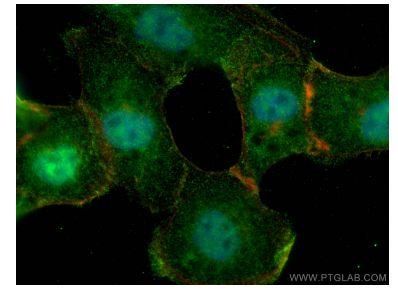
Selected Validation Data



Various lysates were subjected to SDS PAGE followed by western blot with 67741-1-Ig (SIX1 antibody) at dilution of 1:2000 incubated at room temperature for 1.5 hours. This data was developed using the same antibody clone with 67741-1-PBS in a different storage buffer formulation.



Various lysates were subjected to SDS PAGE followed by western blot with 67741-1-Ig (SIX1 antibody) at dilution of 1:2000 incubated at room temperature for 1.5 hours. This data was developed using the same antibody clone with 67741-1-PBS in a different storage buffer formulation.



Immunofluorescent analysis of (4% PFA) fixed A431 cells using SIX1 antibody (67741-1-Ig, Clone: 2D7D1) at dilution of 1:800 and CoraLite®488-Conjugated AffiniPure Goat Anti-Mouse IgG(H+L), CL594-phalloidin (red). This data was developed using the same antibody clone with 67741-1-PBS in a different storage buffer formulation.