

For Research Use Only

# GOT2 Monoclonal antibody, PBS Only



Catalog Number: 67738-1-PBS

## Basic Information

**Catalog Number:**

67738-1-PBS

**Size:**

100ug, Concentration: 1 mg/ml by Nanodrop;

**Source:**

Mouse

**Isotype:**

IgG1

**Immunogen Catalog Number:**

AG6600

**GenBank Accession Number:**

BC000525

**GeneID (NCBI):**

2806

**UNIPROT ID:**

P00505

**Full Name:**

glutamic-oxaloacetic transaminase 2, mitochondrial (aspartate aminotransferase 2)

**Calculated MW:**

47 kDa

**Observed MW:**

39-40 kDa

**Purification Method:**

Protein G purification

**CloneNo.:**

1B6C6

## Applications

**Tested Applications:**

WB, IHC, Indirect ELISA

**Species Specificity:**

Human, mouse, rat, pig, chicken

## Background Information

GOT2 encodes the mitochondrial glutamate oxaloacetate transaminase and plays an essential role in the intracellular NAD(H) redox balance. Upregulation of GOT2 has been reported in various cancers, including breast cancer and pancreatic cancer. GOT2 mutation leads to autosomal recessive neurometabolic disorder.

## Storage

**Storage:**

Store at -80°C.

**Storage Buffer:**

PBS Only

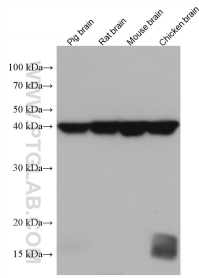
For technical support and original validation data for this product please contact:

T: 1 (888) 4PTGLAB (1-888-478-4522) (toll free in USA), or 1(312) 455-8498 (outside USA)

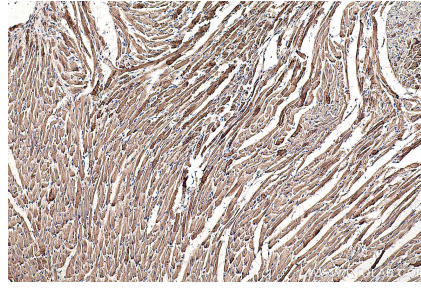
E: [proteintech@ptglab.com](mailto:proteintech@ptglab.com)  
W: [ptglab.com](http://ptglab.com)

This product is exclusively available under Proteintech Group brand and is not available to purchase from any other manufacturer.

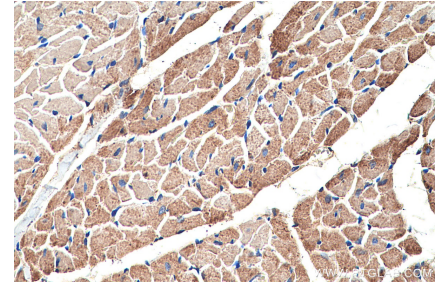
## Selected Validation Data



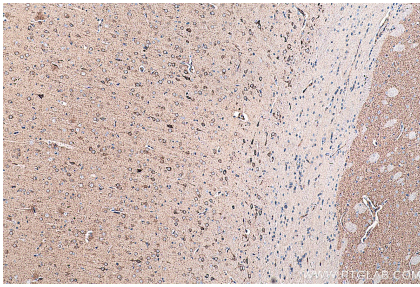
Various lysates were subjected to SDS PAGE followed by western blot with 67738-1-Ig (GOT2 antibody) at dilution of 1:5000 incubated at room temperature for 1.5 hours. This data was developed using the same antibody clone with 67738-1-PBS in a different storage buffer formulation.



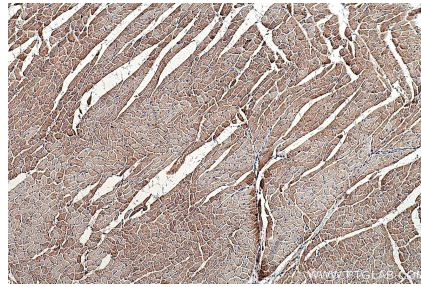
Immunohistochemical analysis of paraffin-embedded mouse heart tissue slide using 67738-1-Ig (GOT2 antibody) at dilution of 1:8000 (under 10x lens). Heat mediated antigen retrieval with Tris-EDTA buffer (pH 9.0). This data was developed using the same antibody clone with 67738-1-PBS in a different storage buffer formulation.



Immunohistochemical analysis of paraffin-embedded rat heart tissue slide using 67738-1-Ig (GOT2 antibody) at dilution of 1:8000 (under 40x lens). Heat mediated antigen retrieval with Tris-EDTA buffer (pH 9.0). This data was developed using the same antibody clone with 67738-1-PBS in a different storage buffer formulation.



Immunohistochemical analysis of paraffin-embedded rat brain tissue slide using 67738-1-Ig (GOT2 antibody) at dilution of 1:8000 (under 10x lens). Heat mediated antigen retrieval with Tris-EDTA buffer (pH 9.0). This data was developed using the same antibody clone with 67738-1-PBS in a different storage buffer formulation.



Immunohistochemical analysis of paraffin-embedded rat heart tissue slide using 67738-1-Ig (GOT2 antibody) at dilution of 1:8000 (under 10x lens). Heat mediated antigen retrieval with Tris-EDTA buffer (pH 9.0). This data was developed using the same antibody clone with 67738-1-PBS in a different storage buffer formulation.