

For Research Use Only

PTGES3 Monoclonal antibody

Catalog Number: 67736-1-Ig **5 Publications**



Basic Information

Catalog Number: 67736-1-Ig	GenBank Accession Number: BC003005	Purification Method: Protein G purification
Size: 150ul , Concentration: 1000 ug/ml by Nanodrop;	GeneID (NCBI): 10728	CloneNo.: 3C11D11
Source: Mouse	UNIPROT ID: Q15185	Recommended Dilutions: WB 1:5000-1:50000 IHC 1:500-1:2000
Isotype: IgG1	Full Name: prostaglandin E synthase 3 (cytosolic)	IF/ICC 1:200-1:800
Immunogen Catalog Number: AG7870	Calculated MW: 19 kDa	
	Observed MW: 22 kDa	

Applications

Tested Applications:
WB, IHC, IF/ICC, ELISA

Cited Applications:
WB, IHC

Species Specificity:
Human, mouse, pig, rat

Cited Species:
human

Note-IHC: suggested antigen retrieval with TE buffer pH 9.0; (*) Alternatively, antigen retrieval may be performed with citrate buffer pH 6.0

Positive Controls:

WB : A549 cells, PC-3 cells, HeLa cells, HepG2 cells, HSC-T6 cells, NIH/3T3 cells, pig brain tissue

IHC : human lung cancer tissue,

IF/ICC : HepG2 cells,

Background Information

P23, encoded by the gene PTGES3, plays a key role in glucocorticoid signaling and was increased at the mRNA level in the DLPFC in individuals with schizophrenia (PMID: 24345775). In the GR heterocomplex in vitro, p23 is an obligatory co-factor19 and is the limiting component of the complex44, functioning to stabilize the interaction of the complex with GR in the cytoplasm. Paradoxically, p23 also acts in the nucleus to inhibit GR-mediated gene transcription and disassemble GR transcriptional machinery in the nucleus (PMID: 12077419). In vivo, p23 is critical for appropriate glucocorticoid responsiveness (PMID: 17000766).

Notable Publications

Author	Pubmed ID	Journal	Application
Pengxiang Gao	35820363	Int Immunopharmacol	WB
Shiwei Liu	39726032	Biol Direct	IHC
Yunhua Yi	39174854	Reprod Sci	WB,IHC

Storage

Storage:

Store at -20°C. Stable for one year after shipment.

Storage Buffer:

PBS with 0.02% sodium azide and 50% glycerol pH 7.3.

Aliquoting is unnecessary for -20°C storage

***** 20ul sizes contain 0.1% BSA**

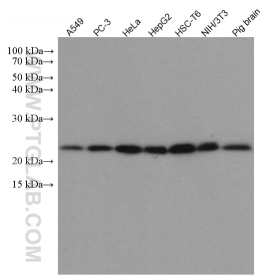
For technical support and original validation data for this product please contact:

T: 1 (888) 4PTGLAB (1-888-478-4522) (toll free in USA), or 1(312) 455-8498 (outside USA)

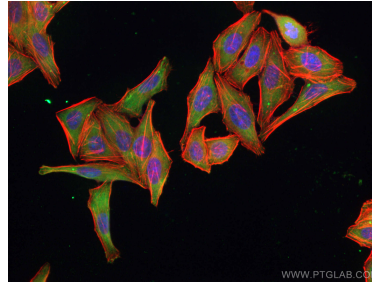
E: proteintech@ptglab.com
W: ptglab.com

This product is exclusively available under Proteintech Group brand and is not available to purchase from any other manufacturer.

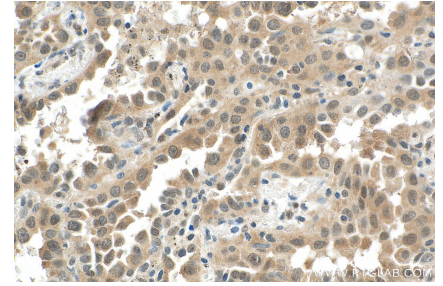
Selected Validation Data



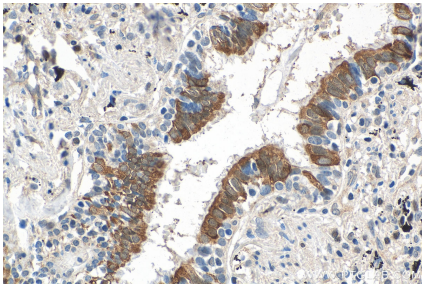
Various lysates were subjected to SDS PAGE followed by western blot with 67736-1-Ig (PTGES3 antibody) at dilution of 1:10000 incubated at room temperature for 1.5 hours.



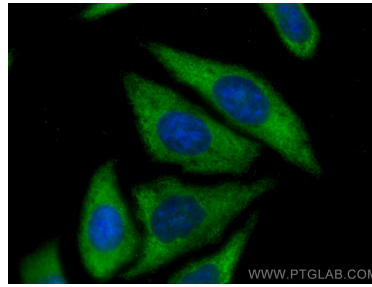
Immunofluorescent analysis of (-20°C Ethanol) fixed HepG2 cells using PTGES3 antibody (67736-1-Ig, Clone: 3C11D11) at dilution of 1:400 and CoraLite®488-Conjugated Goat Anti-Mouse IgG(H+L).



Immunohistochemical analysis of paraffin-embedded human lung cancer tissue slide using 67736-1-Ig (PTGES3 antibody) at dilution of 1:1000 (under 40x lens). Heat mediated antigen retrieval with Tris-EDTA buffer (pH 9.0).



Immunohistochemical analysis of paraffin-embedded human lung cancer tissue slide using 67736-1-Ig (PTGES3 antibody) at dilution of 1:1000 (under 40x lens). Heat mediated antigen retrieval with Tris-EDTA buffer (pH 9.0).



Immunofluorescent analysis of (-20°C Ethanol) fixed HepG2 cells using PTGES3 antibody (67736-1-Ig, Clone: 3C11D11) at dilution of 1:800 and CoraLite®488-Conjugated Goat Anti-Mouse IgG(H+L).