

For Research Use Only

CTPS2 Monoclonal antibody, PBS Only (Capture)



Catalog Number: 67734-1-PBS

Basic Information

Catalog Number: 67734-1-PBS	GenBank Accession Number: BC034986	Purification Method: Protein A purification
Size: 100ug , Concentration: 1mg/ml by Nanodrop;	GeneID (NCBI): 56474	CloneNo.: 1A3B8
Source: Mouse	UNIPROT ID: Q9NRF8	
Isotype: IgG2a	Full Name: CTP synthase II	
Immunogen Catalog Number: AG30258	Calculated MW: 586 aa, 66 kDa	
	Observed MW: 66 kDa	

Applications

Tested Applications:
WB, IHC, IF/ICC, IF-P, Sandwich ELISA, Indirect ELISA

Species Specificity:
human, mouse, rat

Product Information

67734-1-PBS targets CTPS2 as part of a matched antibody pair:

MP50097-1: 67734-1-PBS capture and 67734-2-PBS detection (validated in Sandwich ELISA)

Unconjugated mouse monoclonal antibody pair in PBS only (BSA and azide free) storage buffer at a concentration of 1 mg/mL, ready for conjugation.

This conjugation ready format makes antibodies ideal for use in many applications including: ELISAs, multiplex assays requiring matched pairs, mass cytometry, and multiplex imaging applications. Antibody use should be optimized by the end user for each application and assay.

Background Information

CTPS2 (CTP synthase 2) is also named as UTP--ammonia ligase 2 and belongs to the CTP synthase family. It catalyzes the ATP-dependent amination of UTP to CTP with either L-glutamine or ammonia as the source of nitrogen and constitutes the rate-limiting enzyme in the synthesis of cytosine nucleotides.

Storage

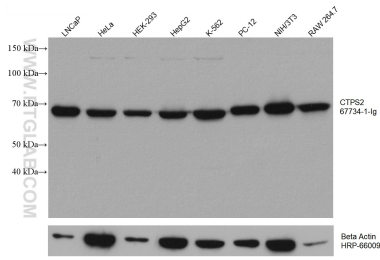
Storage:
Store at -80°C.

Storage Buffer:
PBS Only

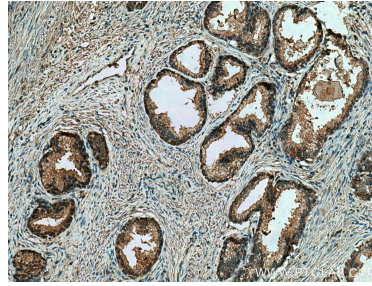
For technical support and original validation data for this product please contact:
T: 1 (888) 4PTGLAB (1-888-478-4522) (toll free in USA), or 1(312) 455-8498 (outside USA) E: proteintech@ptglab.com
W: ptglab.com

This product is exclusively available under Proteintech Group brand and is not available to purchase from any other manufacturer.

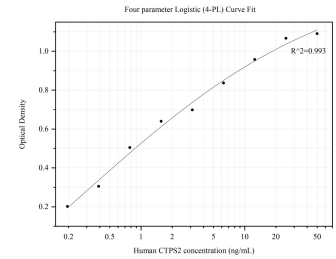
Selected Validation Data



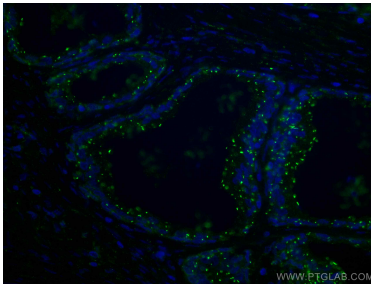
Various lysates were subjected to SDS PAGE followed by western blot with 67734-1-Ig (CTPS2 antibody) at dilution of 1:5000 incubated at room temperature for 1.5 hours. The membrane was stripped and reblotted with HRP-conjugated Beta Actin Monoclonal antibody (HRP-66009) as loading control. This data was developed using the same antibody clone with 67734-1-PBS in a different storage buffer formulation.



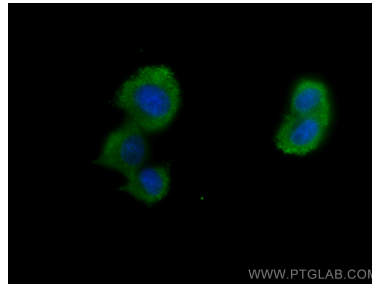
Immunohistochemical analysis of paraffin-embedded human prostate cancer tissue slide using 67734-1-Ig (CTPS2 antibody) at dilution of 1:500 (under 10x lens). Heat mediated antigen retrieval with Tris-EDTA buffer (pH 9.0). This data was developed using the same antibody clone with 67734-1-PBS in a different storage buffer formulation.



Sandwich ELISA standard curve of MP50097-1, CTPS2 Monoclonal Matched Antibody Pair, PBS Only. Capture antibody: 67734-1-PBS. Detection antibody: 67734-2-PBS. Standard: Ag30258. Range: 0.195-50 ng/mL.



Immunofluorescent analysis of (4% PFA) fixed human prostate cancer tissue using CTPS2 antibody (67734-1-Ig, Clone: 1A3B8) at dilution of 1:400 and CoraLite®488-Conjugated AffiniPure Goat Anti-Mouse IgG(H+L). This data was developed using the same antibody clone with 67734-1-PBS in a different storage buffer formulation.



Immunofluorescent analysis of (-20°C Methanol) fixed PC-12 cells using CTPS2 antibody (67734-1-Ig, Clone: 1A3B8) at dilution of 1:800 and CoraLite®488-Conjugated AffiniPure Goat Anti-Mouse IgG(H+L). This data was developed using the same antibody clone with 67734-1-PBS in a different storage buffer formulation.