

For Research Use Only

RPL6 Monoclonal antibody, PBS Only

Catalog Number: 67729-1-PBS



Basic Information

Catalog Number: 67729-1-PBS	GenBank Accession Number: BC004138	Purification Method: Protein A purification
Size: 100ug , Concentration: 1 mg/ml by Nanodrop;	GeneID (NCBI): 6128	CloneNo.: 3F6F8
Source: Mouse	UNIPROT ID: Q02878	
Isotype: IgG1	Full Name: ribosomal protein L6	
Immunogen Catalog Number: AG6840	Calculated MW: 33 kDa	
	Observed MW: 34 kDa	

Applications

Tested Applications:
WB, IF, ELISA

Species Specificity:
Human, mouse, rat

Background Information

Ribosomes are large multiple protein complexes which is composed of more than 80 components and provide a protein-synthesizing machinery for all living cells. Ribosomal protein like 6 (RPL6, also called Taxreb107 for Tax responsive element binding protein 107), one of the ribosomal components, can bind with the Tax responsive element of human T cell leukemia virus (HTLV)-I in addition to be assembled to ribosomes [PMID:12031506]. Overexpressed in gastric cancer could promote cell growth and cell cycle progression at least through upregulating cyclin E expression [PMID:20171175].

Storage

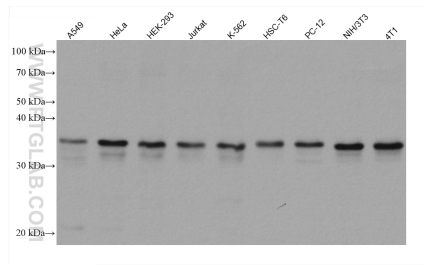
Storage:
Store at -80°C.

Storage Buffer:
PBS only

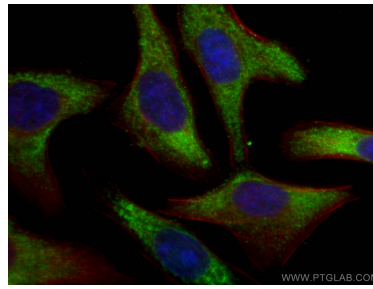
For technical support and original validation data for this product please contact:
T: 1 (888) 4PTGLAB (1-888-478-4522) (toll free in USA), or 1(312) 455-8498 (outside USA) E: proteintech@ptglab.com
W: ptglab.com

This product is exclusively available under Proteintech Group brand and is not available to purchase from any other manufacturer.

Selected Validation Data



Various lysates were subjected to SDS PAGE followed by western blot with 67729-1-Ig (RPL6 antibody) at dilution of 1:20000 incubated at room temperature for 1.5 hours. This data was developed using the same antibody clone with 67729-1-PBS in a different storage buffer formulation.



Immunofluorescent analysis of (-20°C Ethanol) fixed L02 cells using RPL6 antibody (67729-1-Ig, Clone: 3F6F8) at dilution of 1:400 and CoraLite®488-Conjugated AffiniPure Goat Anti-Mouse IgG(H+L), CL594-Phalloidin (red). This data was developed using the same antibody clone with 67729-1-PBS in a different storage buffer formulation.